

Styling Widgets

The CSS Manual



BUILDING BLOCKS **3**

Photo Item 4

Navigation Bar 7

WIDGETS **11**

Coverflow 12

Horizontal 16

Mosaic 18

Photowall 21

Slideshow 23

LIGHTBOX **25**

Desktop Lightbox 26

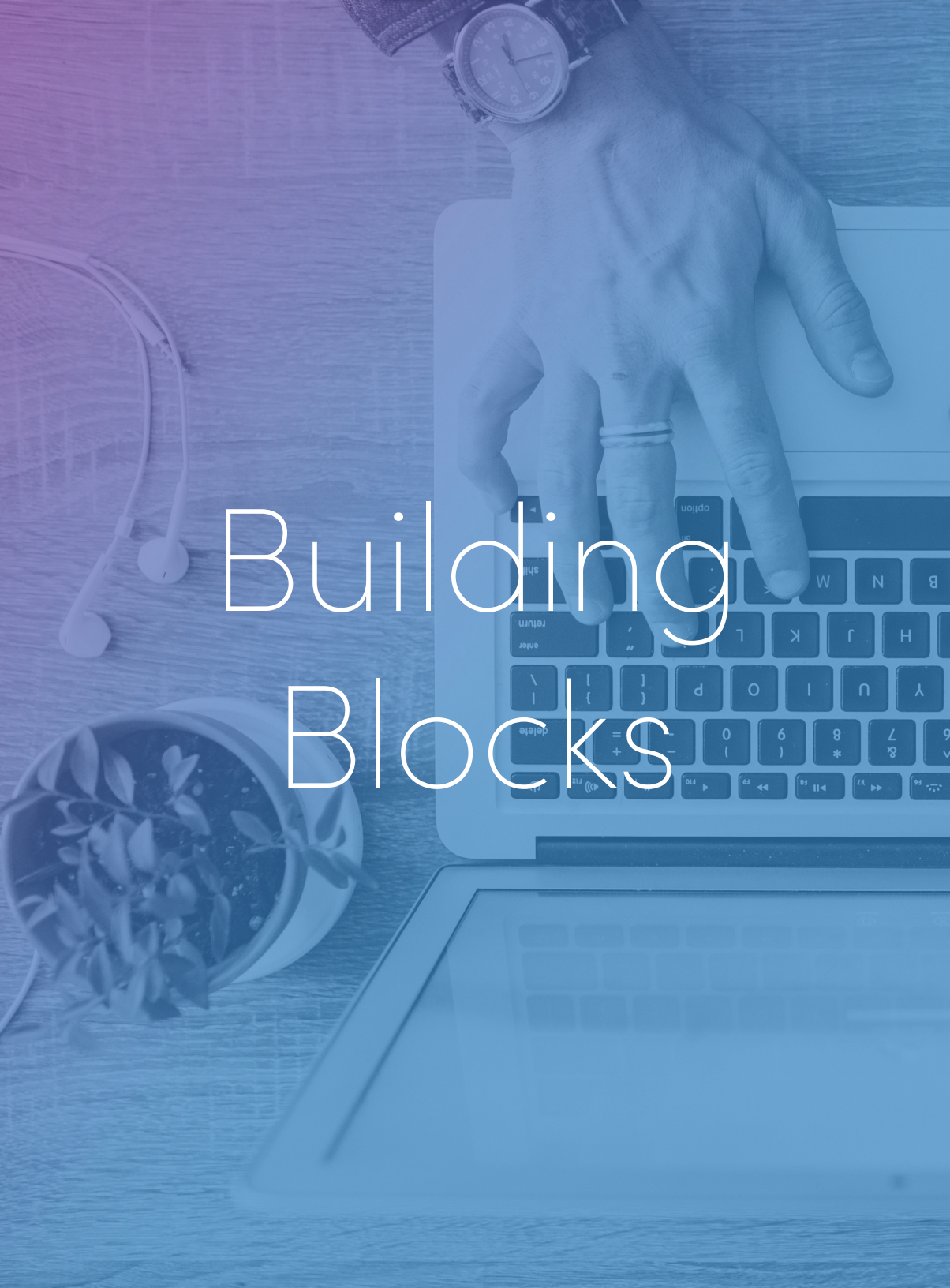
Tablet Lightbox 31

Mobile Lightbox 35

UPLOADER **38**



Table of Contents

A top-down view of a person's hands typing on a laptop keyboard. The person is wearing a watch on their left wrist and a ring on their left ring finger. The scene is set on a wooden desk with a pair of glasses and a small potted plant visible. The entire image has a blue and purple color overlay.

Building Blocks

Building blocks are the foundation of the widgets. These include the photo items and also the interactive widget. Changing any of these building blocks will be reflected in any of the widgets (coverflow, mosaic, etc), and within any of the views (desktop, tablet, and mobile).

Photo Item

The photo item style is used for all widgets. Changing this will globally affect all widgets in desktop, tablet, and mobile.

PHOTO

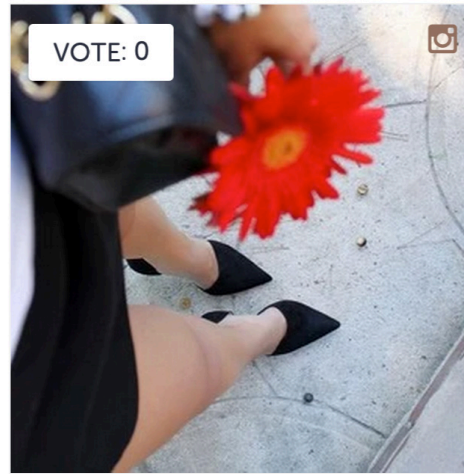
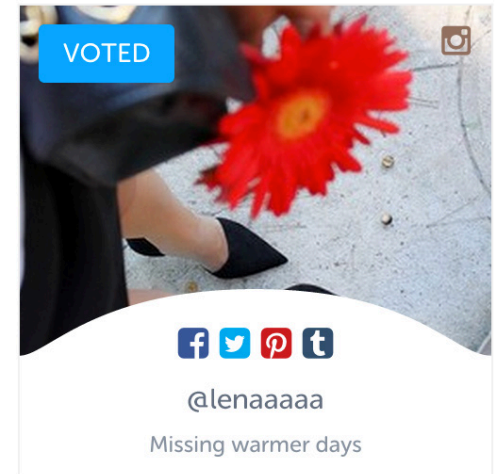
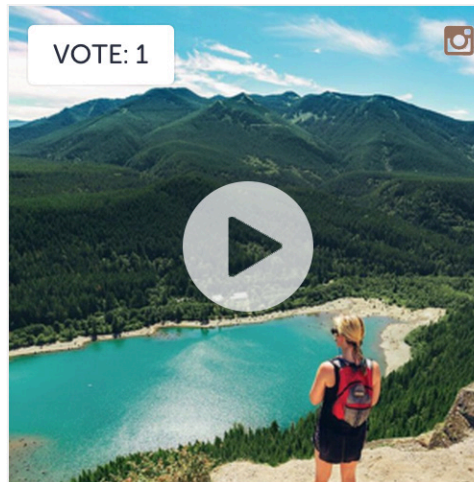


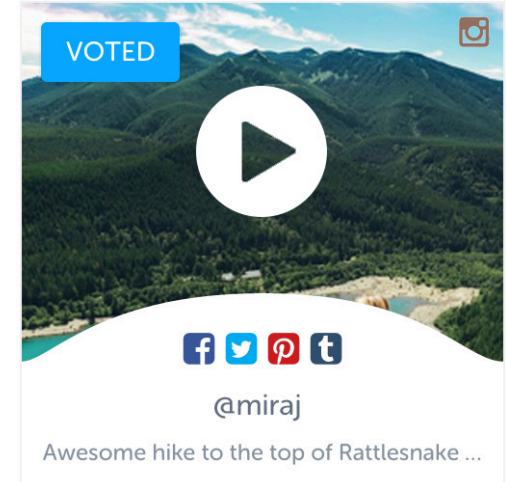
PHOTO ON HOVER & VOTED

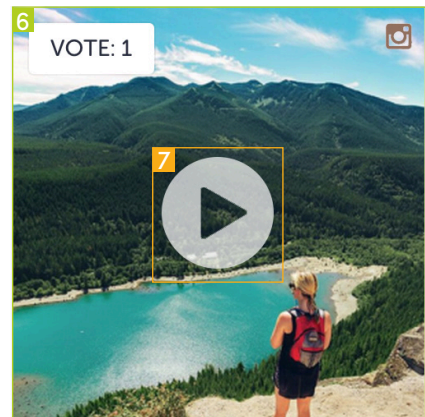
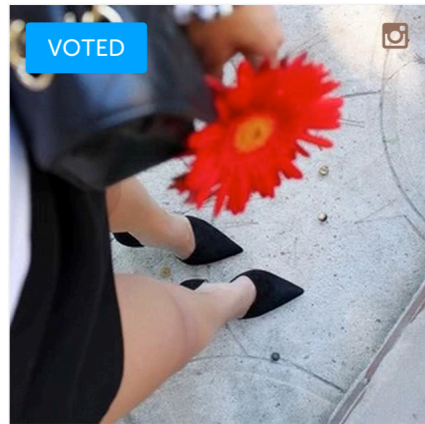
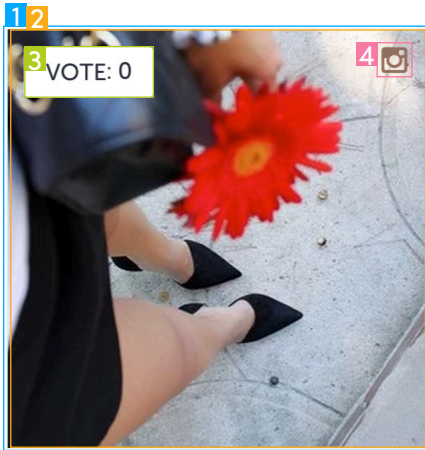


VIDEO



VIDEO ON HOVER & VOTED

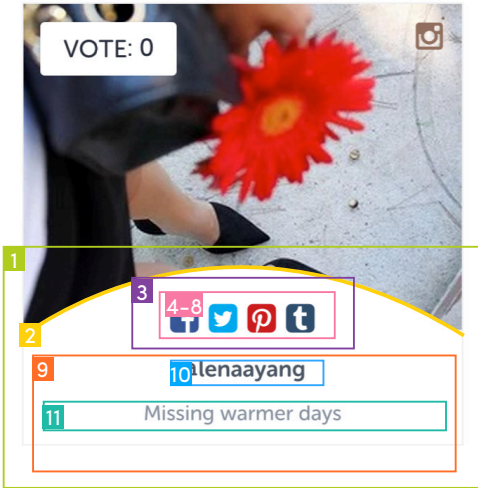




Description

Desktop Selector

1	<code>.photo_block</code> is added to the li of each widget. It holds all info for each photo item, such as image, votes, attribution, submitter info, etc. <code>.photo_block</code> also determines the size of the photo. Normally this is set at 250px x 250px. This can be easily changed in CSS Customization in the CP. Hover effect is added when <code>.photo_block</code> is hovered.	<code>.photo_block</code>
2	Image Holder. This is where the image is. Also has magnifying glass as the cursor. When <code>.photo_block:hovered</code> , <code>.img_holder</code> has a shrinking animation. Size is relative to the <code>.photo_block</code> .	<code>.photo_block .img_holder</code>
3	Vote button. Used for contests where users can vote on photos. The Vote function can be turned on/off in the album settings in the Control Panel. Jelly animation upon hover. "Vote" text is a <code>::before</code> pseudo-element.	<code>.photo_block .vote_button</code>
	Vote Count. Shows the number of votes the photo. The colon ":" is a <code>::before</code> pseudo-element.	<code>.photo_block .vote_button .vote_count</code>
	Voted. When a photo has been voted upon, the button turns blue and is disabled from further voting. The "Vote" text becomes "Voted" and loses its jelly hover effect. The "Voted" text is a <code>::before</code> pseudo-element.	<code>.photo_block .vote_button .vote_count.active</code>
4	Source Platform. Shows the platform that the content is submitted from. These are required by the platforms to properly attribute where the content came from. All icons are <code>:after</code> pseudo-elements.	<code>.photo_block .content_source</code>
	Instagram Platform. Indicates that the content came from Instagram. Icon is an <code>:after</code> psuedo-elements.	<code>.photo_block .content_source.instagram</code>
	Facebook Platform. Indicates that the content came from Facebook. Icon is an <code>:after</code> psuedo-elements.	<code>.photo_block .content_source.facebook</code>
	Twitter Platform. Indicates that the content came from Twitter. Icon is an <code>:after</code> psuedo-elements.	<code>.photo_block .content_source.twitter</code>
	Vine Platform. Indicates that the content came from Vine. Icon is an <code>:after</code> psuedo-elements.	<code>.photo_block .content_source.vine</code>
6	Video Icon Container.	<code>.photo_block .layer_video</code>
7	Video Icon. The play icon is a <code>::before</code> pseudo-element. When <code>.photo_block:hover</code> , the icon delightfully moves upward.	<code>.photo_block .layer_video .play_button</code>

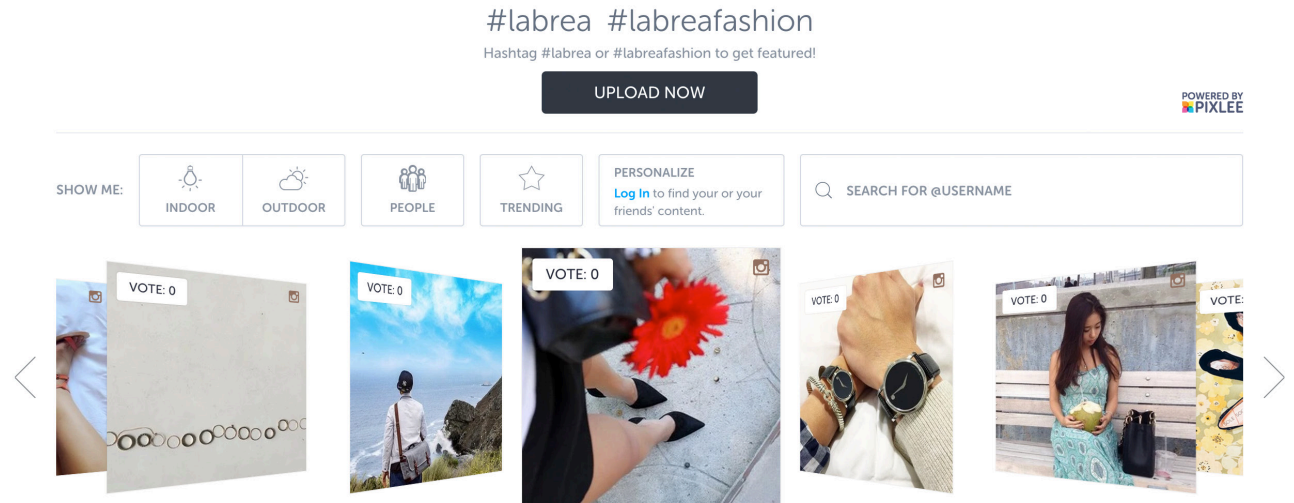


Description	Desktop Selector
1 Content Info Container. Holds social sharing icons, submitter handle, captions, and date submitted. In the default view, this container is hidden. When <code>.photo_block: hover</code> , this slides up into view and the elements listed below come into view.	<code>.photo_block .info_holder</code>
2 Curved Line	<code>.photo_block .info_holder svg</code>
3 Social Sharing Icons Container. Holds all social sharing icons	<code>.photo_block .info_holder .social_holder</code>
4 Social Sharing Icons. Styles all social sharing icons	<code>.photo_block .info_holder .social_holder .social_button</code>
Facebook Sharing Icon. The icon itself is an <code>::after</code> pseudo-element	<code>.photo_block .info_holder .social_holder .social_button .pixlee_fshare</code>
Twitter Sharing Icon. The icon itself is an <code>::after</code> pseudo-element	<code>.photo_block .info_holder .social_holder .social_button .pixlee_tweet</code>
Pinterest Sharing Icon. The icon itself is an <code>::after</code> pseudo-element	<code>.photo_block .info_holder .social_holder .social_button .pixlee_pinit</code>
Tumblr Sharing Icon. The icon itself is an <code>::after</code> pseudo-element	<code>.photo_block .info_holder .social_holder .social_button .pixlee_tumblr</code>
9 Submission Info. Holds submitter handle, captions, and date content was submitted.	<code>.photo_block .info_holder .info_content</code>
10 Submitter Handle or Name	<code>.photo_block .info_holder .info_content .users_handle a</code>
11 Caption.	<code>.photo_block .info_holder .info_content .users_caption</code>

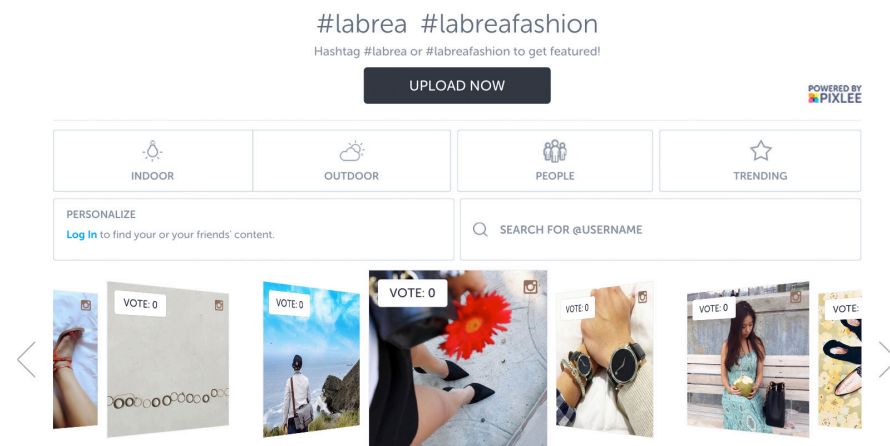
Navigation Bar

Navigation bar in the desktop view styles all elements in desktop, tablet, and mobile for all widgets. Navigation bar is not available in mosaic or slideshow.

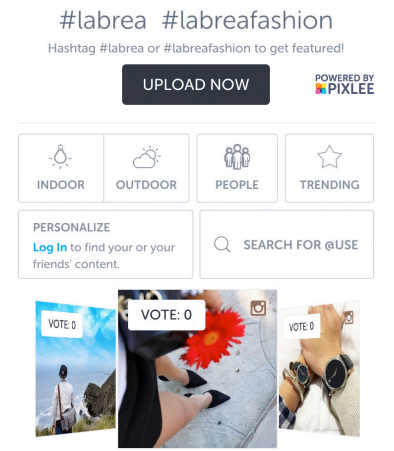
DESKTOP VIEW

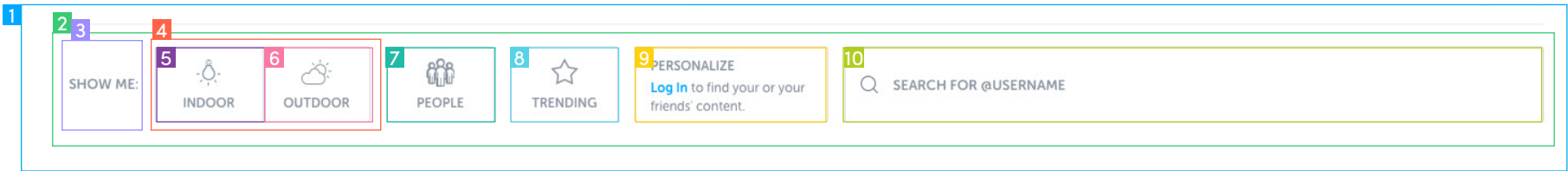


TABLET VIEW

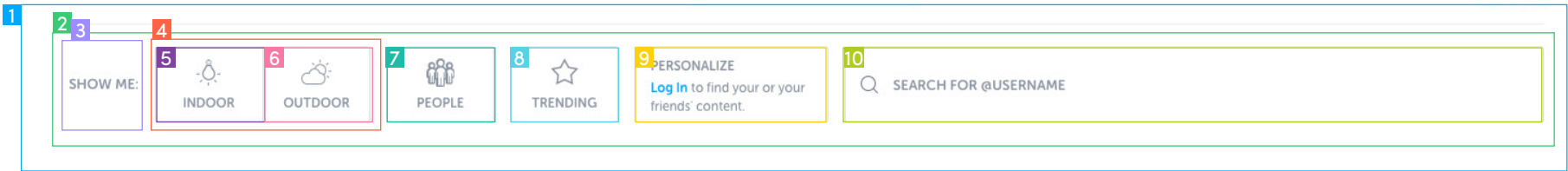


MOBILE VIEW





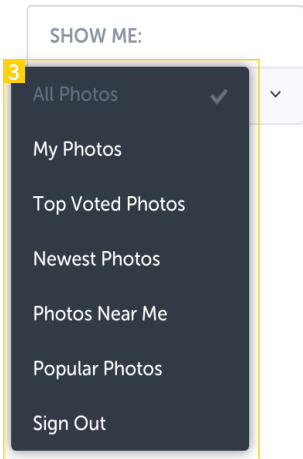
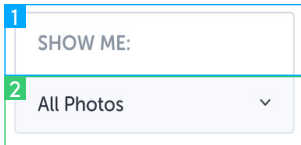
Description	Desktop Selector	Tablet Selector	Mobile Selector
1 Navigation Bar Container. Holds the whole navigation bar section	<code>#interactive_section</code>	<code>#interactive_section</code>	<code>#interactive_section</code>
2 Navigation Bar Container. Gives the Navigation Bar padding and margins along the sides	<code>#interactive_section #interaction_wrapper</code>	<code>#interactive_section #interaction_wrapper</code>	<code>#interactive_section #interaction_wrapper</code>
3 “Show Me” Title. “Show me” is a <code>::before</code> pseudo-element. This title is hidden in the tablet and mobile views	<code>#interactive_section #interaction_wrapper #filter_title</code>	<code>#interactive_section #interaction_wrapper #tablet_view #filter_title</code>	<code>#interactive_section #interaction_wrapper #mobile_view #filter_title</code>
Styles all filters, including the hover blue-border effect	<code>#interactive_section #interaction_wrapper .filter_box</code>	<code>#interactive_section #interaction_wrapper #tablet_view .filter_box</code>	<code>#interactive_section #interaction_wrapper #mobile_view .filter_box</code>
4 Contains the indoor/outdoor filters	<code>#interactive_section #interaction_wrapper #indoor_outdoor_box</code>	<code>#interactive_section #interaction_wrapper #tablet_view #indoor_outdoor_box</code>	<code>#interactive_section #interaction_wrapper #mobile_view #indoor_outdoor_box</code>
For the Indoor, Outdoor, People, and Trending filter buttons, the icon is a <code>::before</code> pseudo-element. An <code>.active</code> class is added for when the filter is being applied. The clearing filter icon is an <code>::after</code> pseudo-element attached to <code>.active</code> .			
5 Indoor Toggle. The indoor toggle button filters all content to only display content that are indoors.	<code>#interactive_section #interaction_wrapper #indoor_outdoor_box #indoor_box</code>	<code>#interactive_section #interaction_wrapper #tablet_view #indoor_outdoor_box #indoor_box</code>	<code>#interactive_section #interaction_wrapper #mobile_view #indoor_outdoor_box #indoor_box</code>
6 Outdoor Toggle. The Outdoor button filters all content to only display content that are outdoors.	<code>#interactive_section #interaction_wrapper #indoor_outdoor_box #outdoor_box</code>	<code>#interactive_section #interaction_wrapper #tablet_view #indoor_outdoor_box #outdoor_box</code>	<code>#interactive_section #interaction_wrapper #mobile_view #indoor_outdoor_box #outdoor_box</code>



7	People Button. The People button filters all content to only display content with peple.	#interactive_section #interaction_wrapper #people_box	#interactive_section #interac- tion_wrapper #tablet_view #peo- ple_box	#interactive_section #inter- action_wrapper #mobile_view #people_box
8	Trending Button. The Trending button filters all content to only display content that are trending.	#interactive_section #interaction_wrapper #trending_ box	#interactive_section #interac- tion_wrapper #tablet_view #trend- ing_box	#interactive_section #inter- action_wrapper #mobile_view #trending_box
9	Sign in Button. Personalize the experience allows the user to log in and find their own content or their friends' content. More of this on next page.	#interactive_section #interaction_wrapper #personalize_box	#interactive_section #interac- tion_wrapper #tablet_view #per- sonalize_box	#interactive_section #inter- action_wrapper #mobile_view #personalize_box
10	Search. The Search box searches and displays content from a specific userhandle.	#interactive_section #interaction_wrapper #search_box_ holder	#interactive_section #inter- action_wrapper #tablet_view #search_box_holder	#interactive_section #inter- action_wrapper #mobile_view #search_box_holder
	Clear search button	#interactive_section #interaction_wrapper #search_box_ holder #clear_search	#interactive_section #interaction_wrapper #tablet_view #search_box_holder #clear_search	#interactive_section #interaction_wrapper #mobile_view #search_box_ holder #clear_search

PERSONALIZE

[Log In](#) to find your or your friends' content.



Description	Desktop Selector	Tablet Selector	Mobile Selector
<p>For users to have the best experience on the widget, it's best for them to sign in. The first image shows the default view. After the user logs in, the first view is replaced by the second picture. This is where the viewer can see what type of content is currently selected. The default is "All Photos." Clicking in this selection brings up the dropdown, which is shown in the third picture. This is where the viewer can see more tailored content.</p>			
<p>1 "Show Me" Title.</p>	<pre>#interactive_section #interaction_wrapper #personalize_box #show_me_title</pre>	<pre>#interactive_section #interaction_wrap- per #tablet_view #personalize_box #show_me_title</pre>	<pre>#interactive_section #interaction_wrapper #mobile_view #person- alize_box #show_me_ti- tle</pre>
<p>2 Dropdown Selection. Shows what type of content is being shown within the widget. The text is a <code>:before</code> pseudo-element, and the down arrow is an <code>:after</code> pseudo-element. Clicking on this region also shows the dropdown.</p>	<pre>#interactive_section #interaction_wrapper #personalize_box #in- teraction_toggle</pre>	<pre>#interactive_section #interaction_wrapper #tablet_view #per- sonalize_box #in- teraction_toggle</pre>	<pre>#interactive_section #interaction_wrapper #mobile_view #person- alize_box #interac- tion_toggle</pre>
<p>3 Dropdown List. Contains all dropdown options.</p>	<pre>#interactive_section #interaction_wrap- per #personalize_box #dropdown_list</pre>	<pre>#interactive_section #interaction_wrapper #tablet_view #per- sonalize_box #drop- down_list</pre>	<pre>#interactive_section #interaction_wrapper #mobile_view #person- alize_box #dropdown_ list</pre>
<p>Dropdown Items. These are the individual options within the dropdown. The text within each item is listed as a pseudo-element. When an item is selected, a <code>.checked</code> class is added, which turns the selection gray and adds a checkmark within the <code>:after</code> pseudo-element.</p>	<pre>#interactive_section #interaction_wrap- per #personalize_box #dropdown_list .drop- down_list_item</pre>	<pre>#interactive_section #interaction_wrapper #tablet_view #per- sonalize_box #drop- down_list .drop- down_list_item</pre>	<pre>#interactive_section #interaction_wrapper #mobile_view #person- alize_box #dropdown_ list .dropdown_list_ item</pre>



Widgets

Widgets, such as coverflow or mosaic, display the `.photo_block` into different arrangements for desktop, tablet, and mobile.

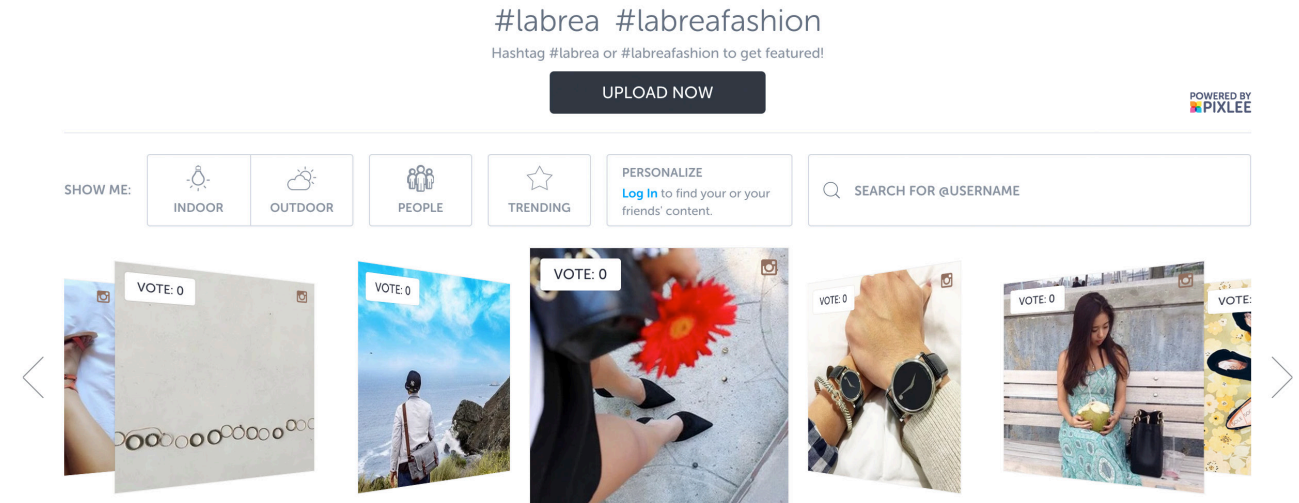
Coverflow

Coverflow is best used for homepages, PDPs, and pages with limited space.

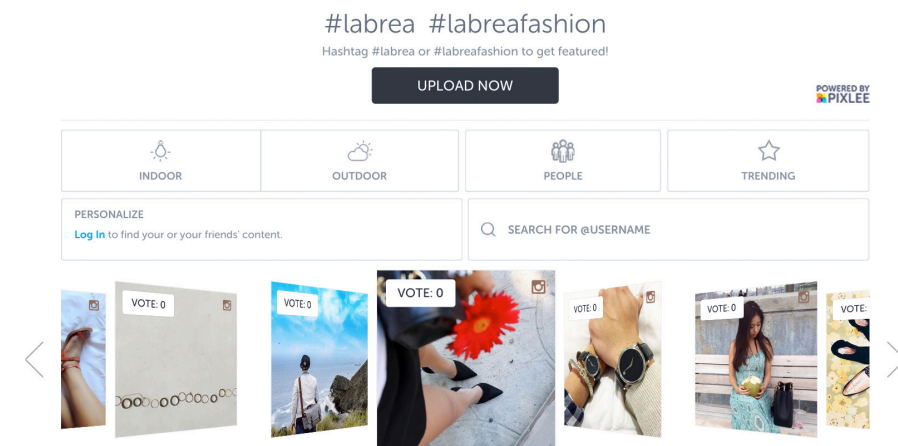
The images to the right show how Coverflow looks in desktop, tablet, and mobile view.

- Changing any of the selectors on pages 12-14 will affect all desktop, tablet, and mobile Coverflow views.
- To style elements in only tablet view and not affect desktop and mobile views
 - add `.coverflow_tablet` at the beginning of the selector.
- To style elements in only mobile view and not affect desktop and tablet views
 - add `.coverflow_mobile` to the beginning of the selector.
- Example
 - Default selector: `#widget_header #description_holder`
 - Tablet selector: `.coverflow_tablet #widget_header #description_holder`
 - Mobile selector: `.coverflow_mobile #widget_header #description_holder`

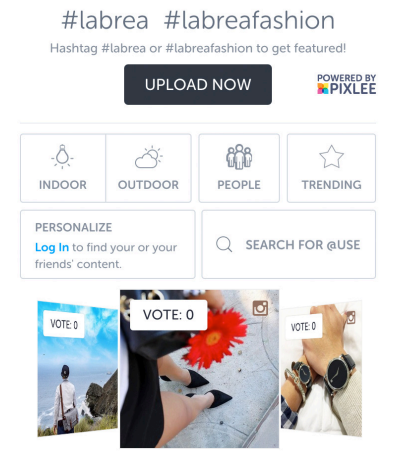
DESKTOP VIEW

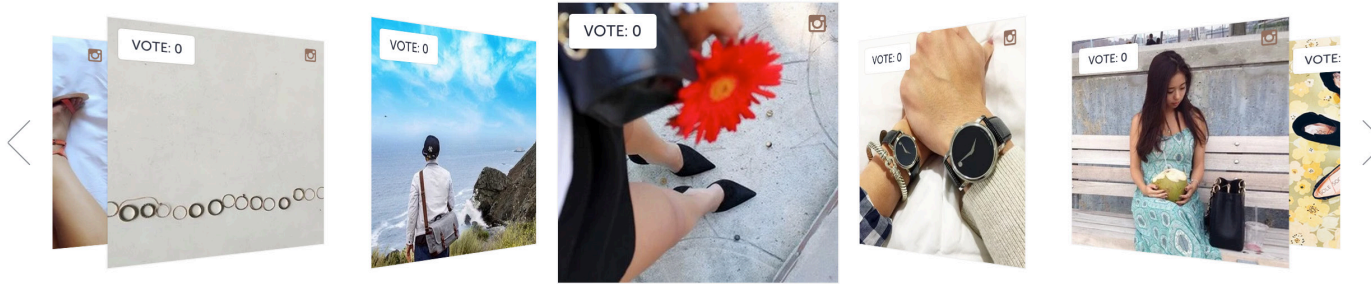
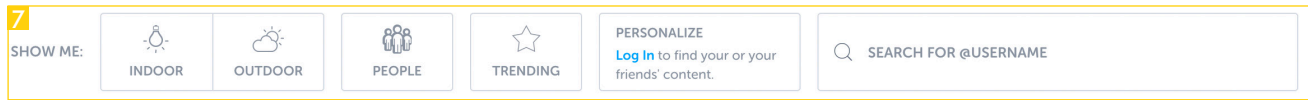
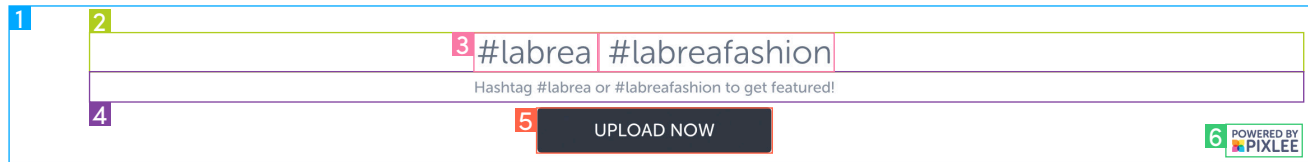


TABLET VIEW



MOBILE VIEW





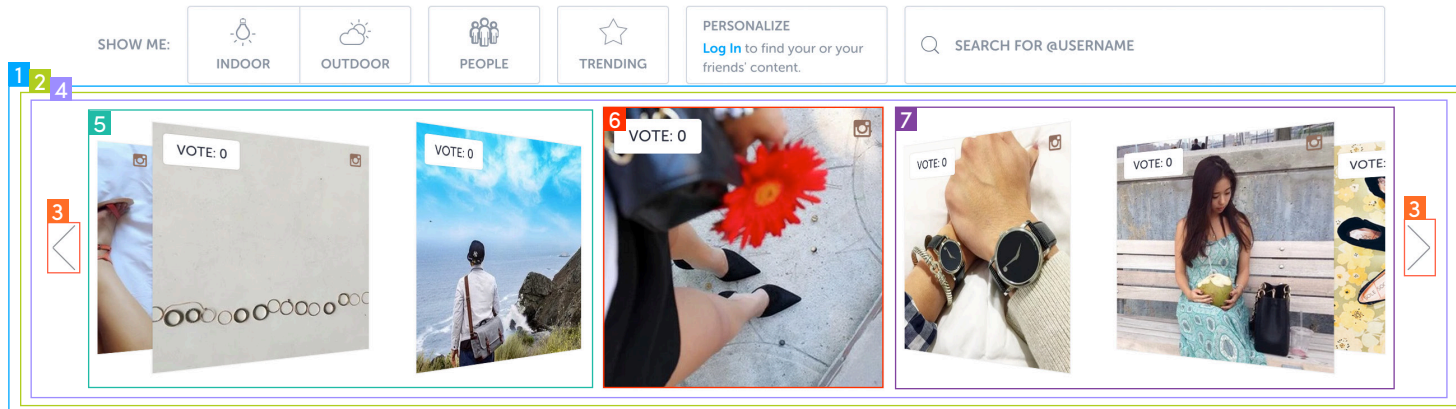
Description	Selector
1 Header block. Holds hashtags, collection description, uploading new content button, and Pixlee attribution.	#widget_header
2 Hashtags block. Displays the hashtags used to collect the displayed content in the widget.	#widget_header #hashtag_holder
3 Individual Hashtags.	#widget_header #hashtag_holder li
4 Collection Description.	#widget_header #description_holder
5 Upload More Content Button. Clicking on the button allows the user to add photos to the widget. See “Uploader” on page 38 for the whole uploading flow. The “Upload Now” text is an :after pseudo-element	#widget_header #upload_now
6 Powered by Pixlee Attribution Icon. Required on all widgets except widgets of Enterprise customers	#widget_header a
7 Navigation Bar. The navigation bar allows customers to have a more interactive experience as they filter content to their own liking. Look at “Navigation Bar” on page 7 to style the Navigation Bar for desktop, tablet, and mobile.	

#labrea #labrefashion

Hashtag #labrea or #labrefashion to get featured!

UPLOAD NOW

POWERED BY
PIXLEE



Description

Selector

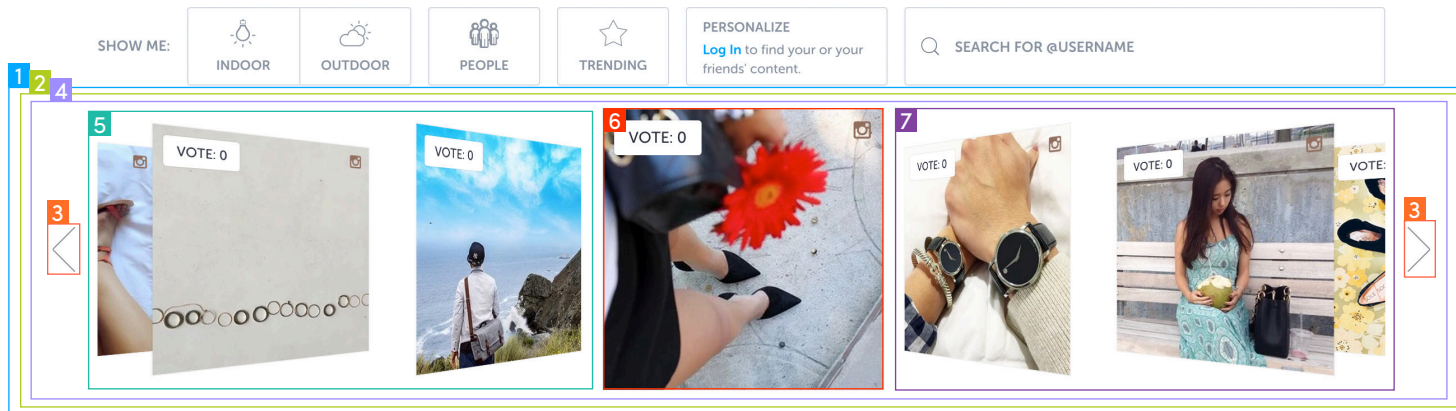
1	Widget Container. Contains whole widget, including arrows.	<code>.wrap</code>
2	Arrows Container. Contains the arrows. In mobile view, this is hidden, and users can see more photos by just swiping left and right.	<code>.controls</code>
3	Left Arrow	<code>.controls .btn.prev</code>
	Right Arrow	<code>.controls .btn.next</code>
4	Content Container. Contains the photos and gives the width of the widget. Gives the perspective	<code>#coverflow_widget .coverflow_frame</code>
5	Photo Item. Used in conjunction with “Photo Item” on page 4 , this selector styles each photo block in the coverflow widget. Also controls the rotation of the photos to the left of the middle photo.	<code>#coverflow_widget .coverflow_frame ul li</code>
	Hover Effect on Photos. Upon hover, image scales slightly bigger. There are no hover effects in tablet and mobile.	<code>#coverflow_widget .coverflow_frame ul li:hover .img_holder</code>
	Hover Effect for Videos. Upon hovering in other widgets, the video button moves and scales slightly bigger. In coverflow, the video button does not scale or move upon hover unless it's the middle photo. There are no hover effects in tablet and mobile.	<code>#coverflow_widget .coverflow_frame ul li:hover .layer_video</code>

#labrea #labreafashion

Hashtag #labrea or #labreafashion to get featured!

UPLOAD NOW

POWERED BY
PIXLEE



Description

Hover Effect for Content Info. Upon hovering in other widgets, the `.info_holder` slides up and is shown. In coverflow, the `.info_holder` does not show upon hover unless it's the middle photo. There are no hover effects in tablet and mobile.

Selector

```
#coverflow_widget .coverflow_frame ul li:hover  
.info_holder{  
  display: none;  
}
```

6 **Middle Photo Style.** Styles the middle photo so that there is no rotation

```
#coverflow_widget .coverflow_frame ul li.active
```

Hover Effect for Middle Photo. Upon hovering over the middle photo, image moves up and scales bigger. There are no hover effects in tablet and mobile.

```
#coverflow_widget .coverflow_frame ul li.active: hover  
.img_holder
```

Hover Effect on Middle Video. Upon hovering over the middle photo, video icon moves up. There are no hover effects in tablet and mobile.

```
#coverflow_widget .coverflow_frame ul li.active: hover  
.layer_video
```

Hover Effect on Middle Photo Info. Upon hovering over the middle photo, Photo info is shown. There are no hover effects in tablet and mobile.

```
#coverflow_widget .coverflow_frame ul li.active: hover  
.info_holder
```

7 **Rotation Effect on Right Photos.** Controls the rotation of all photos to the right of the middle photo

```
#coverflow_widget .coverflow_frame ul li.active  
~ li
```

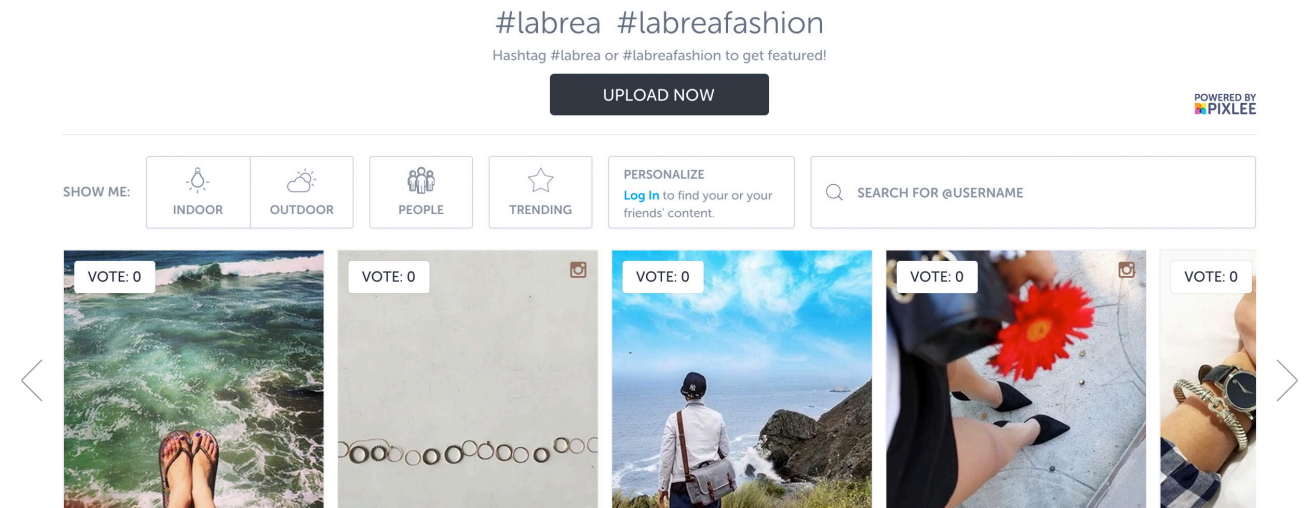
Horizontal

Horizontal is best used for homepages, PDPs, and pages with limited space.

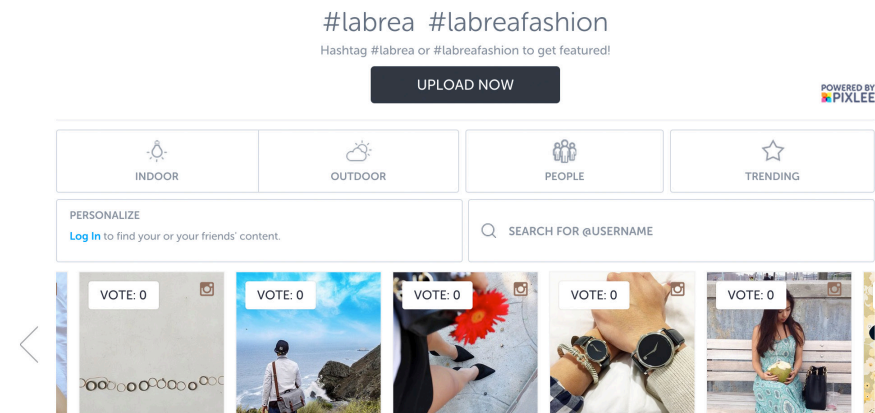
The images to the right show how Horizontal looks in desktop, tablet, and mobile view.

- Changing any of the selectors on page 16 will affect all desktop, tablet, and mobile Horizontal views.
- To style elements in only tablet view and not affect desktop and mobile views
 - add `.horizontal_tablet` at the beginning of the selector.
- To style elements in only mobile view and not affect desktop and tablet views
 - add `.horizontal_mobile` to the beginning of the selector.
- Example
 - Default selector: `#widget_header #description_holder`
 - Tablet selector: `.horizontal_tablet #widget_header #description_holder`
 - Mobile selector: `.horizontal_mobile #widget_header #description_holder`

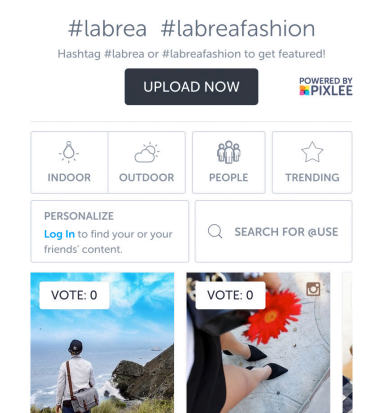
DESKTOP VIEW

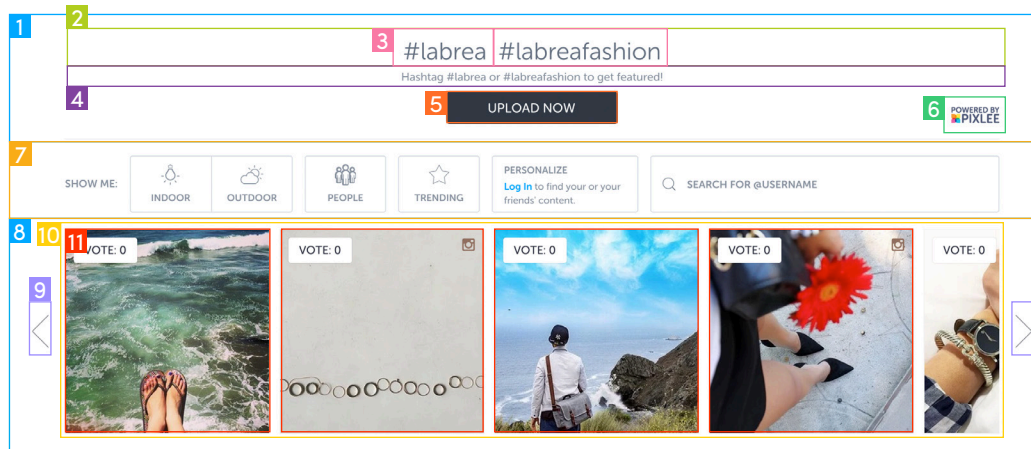


TABLET VIEW



MOBILE VIEW





Description	Selector
1 Header block. Holds hashtags, collection description, uploading new content button, and Pixlee attribution.	#widget_header
2 Hashtags block. Displays the hashtags used to collect the displayed content in the widget.	#widget_header #hashtag_holder
3 Individual Hashtags.	#widget_header #hashtag_holder li
4 Collection Description.	#widget_header #description_holder
5 Upload More Content Button. Clicking on the button allows the user to add photos to the widget. See “Upload More Content” on page 38 for the whole uploading flow. The “Upload Now” text is an :after pseudo-element.	#widget_header #upload_now
6 Powered by Pixlee Attribution Icon. Required on all widgets except widgets of Enterprise customers	#widget_header a
7 Navigation Bar. The navigation bar allows customers to have a more interactive experience as they filter content to their own liking. Look at “Navigation Bar” on page 39 to style the Navigation Bar for desktop, tablet, and mobile.	
8 Widget Container. Contains whole widget, including arrows.	.wrap
9 Arrows Container. Contains the arrows. In mobile view, this is hidden, and users can see more photos by just swiping left and right.	.controls
Left Arrow	.controls .btn.prev
Right Arrow	.controls .btn.next
10 Content Container. Contains the photos and gives the width of the widget.	#horizontal_widget .horizontal_frame
11 Photo Item. Used in conjunction with “Photo Item” on page 4 , this selector styles each photo block in the horizontal widget.	#horizontal_widget .horizontal_frame ul li

Mosaic

Slideshow is best used for inspiration galleries, fan photo displays and contests.

The images to the right show how Mosaic looks in desktop, tablet, and mobile view.

Mosaic does not have a Navigation Bar. Mosaic will only show photos in multiples of 16.

- Changing any of the selectors on pages 18-19 will affect all Mosaic desktop, tablet, and mobile views.
- To style elements in only tablet view and not affect desktop and mobile views
 - add `.mosaic_tablet` at the beginning of the selector.
- To style elements in only mobile view and not affect desktop and tablet views
 - add `.mosaic_mobile` to the beginning of the selector.
- Example
 - Default selector: `#widget_header #description_holder`
 - Tablet selector: `.mosaic_tablet #widget_header #description_holder`
 - Mobile selector: `.mosaic_mobile #widget_header #description_holder`

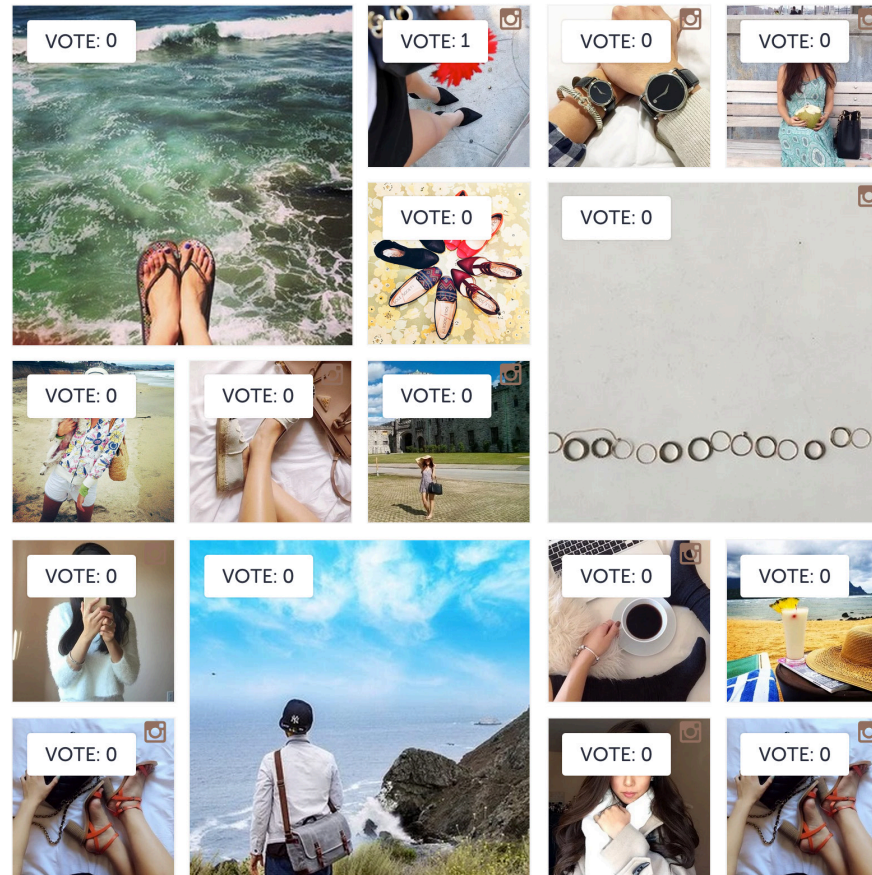
DESKTOP & TABLET VIEWS

#labrea #labrefashion

Hashtag #labrea or #labrefashion to get featured!

UPLOAD NOW

POWERED BY
PIXLEE



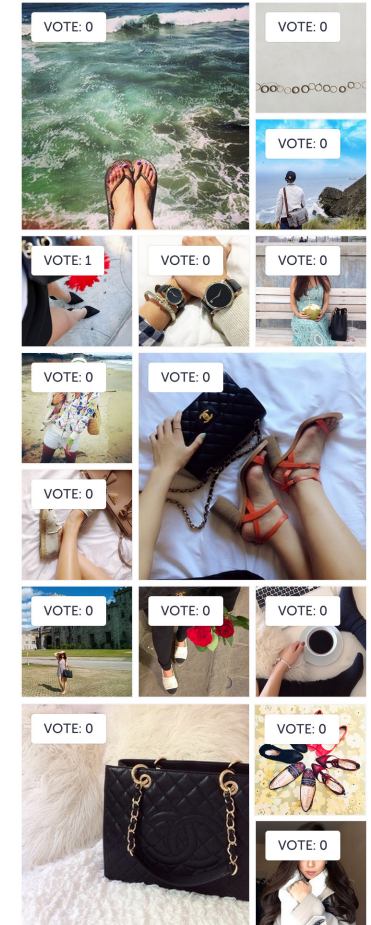
MOBILE VIEW

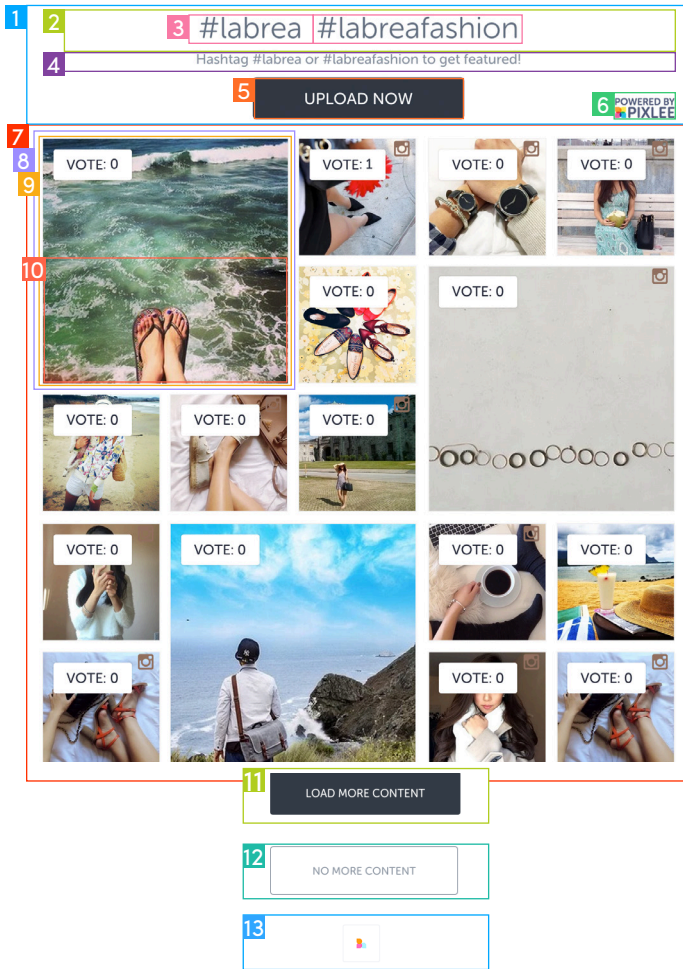
#labrea #labrefashion

Hashtag #labrea or #labrefashion to get featured!

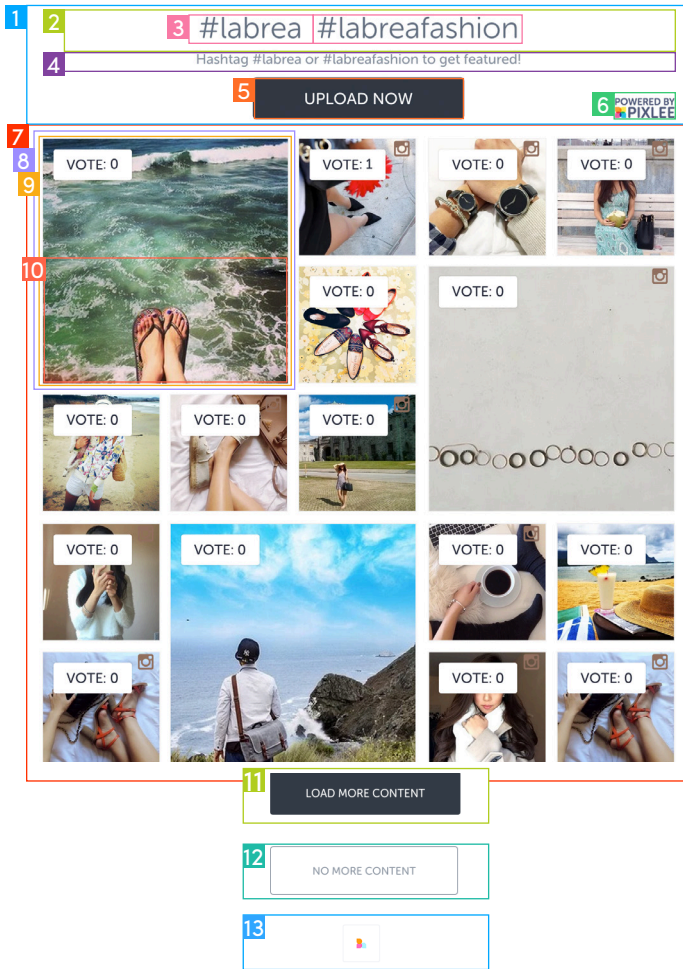
UPLOAD NOW

POWERED BY
PIXLEE





	Description	Desktop Selector
1	Header block. Holds hashtags, collection description, uploading new content button, and Pixlee attribution.	<code>#widget_header</code>
2	Hashtags block. Displays the hashtags used to collect the displayed content in the widget.	<code>#widget_header #hashtag_holder</code>
3	Individual Hashtags.	<code>#widget_header #hashtag_holder li</code>
4	Collection Description.	<code>#widget_header #description_holder</code>
5	Upload More Content Button. Clicking on the button allows the user to add photos to the widget. See “Uploader” on page 38 for the whole uploading flow. The “Upload Now” text is an :after pseudo-element	<code>#widget_header #upload_now</code>
6	Powered by Pixlee Attribution Icon. Required on all widgets except widgets of Enterprise customers	<code>#widget_header a</code>
7	Widget Container. Holds all content and gives the mosaic widget its square shape	<code>.mosaic_frame ul</code>
8	Photo Item Container. Holds 2 <code>.photo_block</code> so that one <code>.photo_block</code> is always loading the next content for the fade in/out effect	<code>.mosaic_frame ul .photo_item_container</code>
9	Photo Item. Used in conjunction with “Photo Item” on page 4 , this selector styles each photo block in the coverflow widget. Also controls the rotation of the photos to the left of the middle photo.	<code>.mosaic_frame ul .photo_item_container .photo_block</code>
	Hover Effect Image. Scales the content slightly upon hover	<code>.mosaic_frame ul .photo_item_container .photo_block:hover .img_holder</code>



Description

- 10** **Photo Info.** For most widgets, the photo info contains the social sharing icons, the user handle, the caption and the photo submission date. In other widgets, the default behavior is to show the photo info upon hover. This is hidden within the mosaic view. If you want to display individual elements within the `.info_holder`, please refer to [.photo_item](#).
- 11** **Load More Button.** Clicking on button loads more photos into the widget. "Load More" text is a `::before` pseudo-element. Jelly animation upon hover.
- 12** **Loader.** Icon spins to show that the widget is currently loading more photos to display.
- 13** **No More Content to Load Notification.** "No More Content" is a `::before` pseudo-element

Desktop Selector

`.mosaic_frame ul .photo_item_container .photo_block .info_holder`

`#mosaic_control .load_more`

`#mosaic_control .load_more.loading`

`#mosaic_control .load_more.no_more_photos`

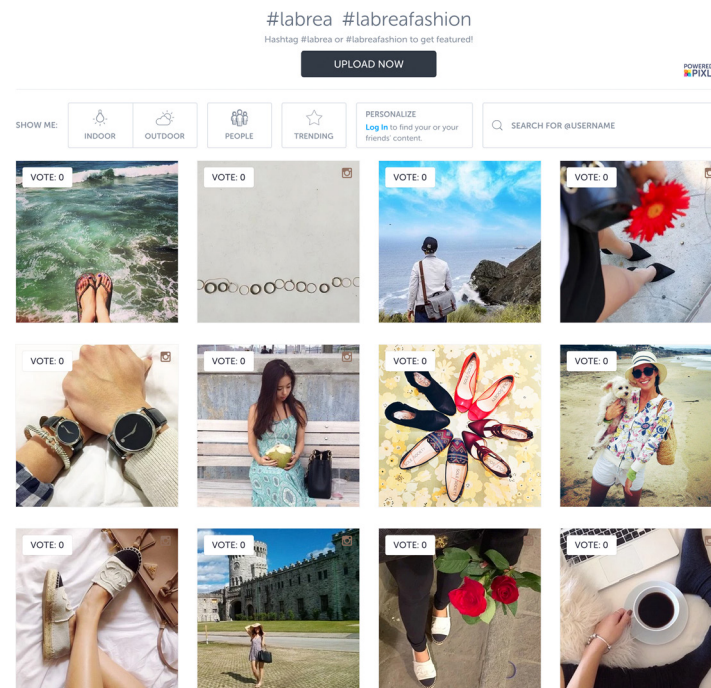
Photowall

Photowall is best used for galleries, fan photo displays, and contests.

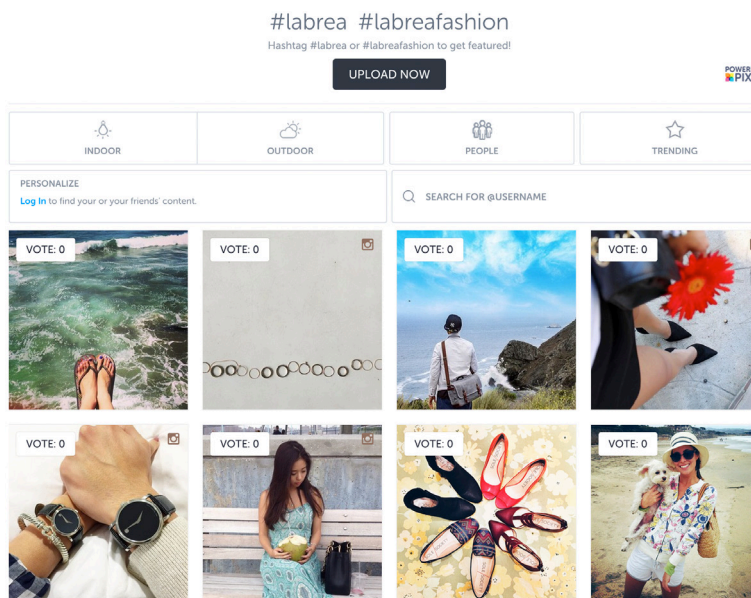
The images to the right show how Photowall looks in desktop, tablet, and mobile view.

- Changing any of the selectors on page 21 will affect all Photowall desktop, tablet, and mobile views.
- To style elements in only tablet view and not affect desktop and mobile views
 - add `.photowall_tablet` at the beginning of the selector.
- To style elements in only mobile view and not affect desktop and tablet views
 - add `.photowall_mobile` to the beginning of the selector.
- Example
 - Default selector: `#widget_header #description_holder`
 - Tablet selector: `.photowall_tablet #widget_header #description_holder`
 - Mobile selector: `.photowall_mobile #widget_header #description_holder`

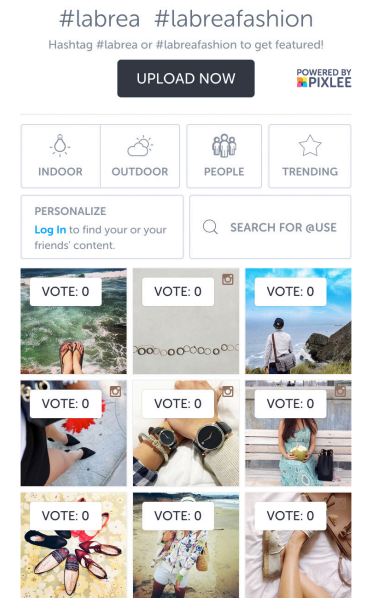
DESKTOP VIEW



TABLET VIEW



MOBILE VIEW





	Description	Selector
1	Header block. Holds hashtags, collection description, uploading new content button, and Pixlee attribution.	#widget_header
2	Hashtags block. Displays the hashtags used to collect the displayed content in the widget.	#widget_header #hashtag_holder
3	Individual Hashtags.	#widget_header #hashtag_holder li
4	Collection Description.	#widget_header #description_holder
5	Upload More Content Button. Clicking on the button allows the user to add photos to the widget. See “Uploader” on page 38 for the whole uploading flow. The “Upload Now” text is an :after pseudo-element	#widget_header #upload_now
6	Powered by Pixlee Attribution Icon. Required on all widgets except widgets of Enterprise customers	#widget_header a
7	Navigation Bar. The navigation bar allows customers to have a more interactive experience as they filter content to their own liking. Look at “Navigation Bar” on page 7 to style the Navigation Bar for desktop, tablet, and mobile.	
8	Widget Container. Contains whole widget, including all photo blocks and Load More button.	.wrap
9	Photo Item. Used in conjunction with “Photo Item” on page 4 , this selector styles each photo block in the coverflow widget.	
10	Load More Button. Clicking on button loads more photos into the widget. “Load More” text is a ::before pseudo-element. Jelly animation upon hover.	#photowall_widget #photowall_control .load_more
11	Loader. The loader replaces the Load More Button. Icon spins to show that the widget is currently loading more photos to display.	#photowall_widget #photowall_control .load_more.loading
12	No More Content to Load Notification. Notification replaces the Load More Button. “No More Content” is a ::before pseudo-element	#photowall_widget #photowall_control .load_more.no_more_photos

Slideshow

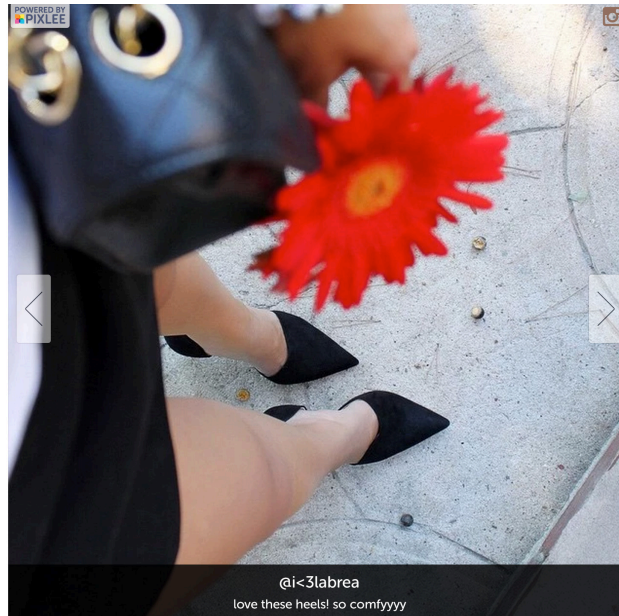
Slideshow is best used for homepages, PDPs, and pages with limited space.

The images to the right show how Slideshow looks in desktop, tablet, and mobile view.

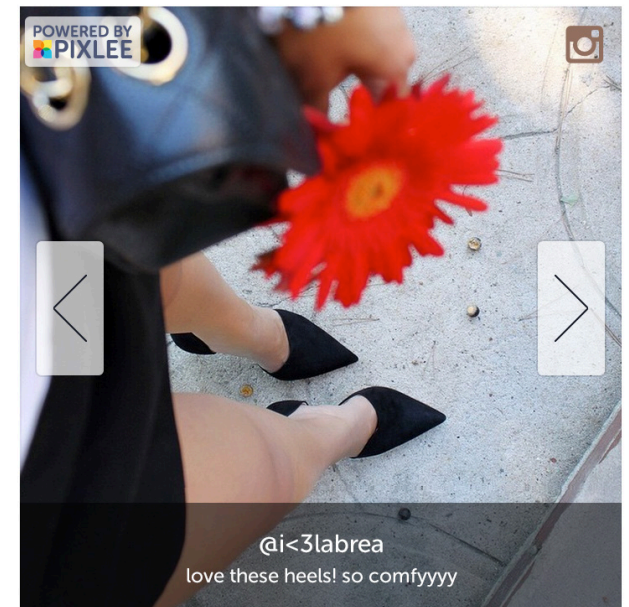
Slideshow does not have Header and Navigation Bar.

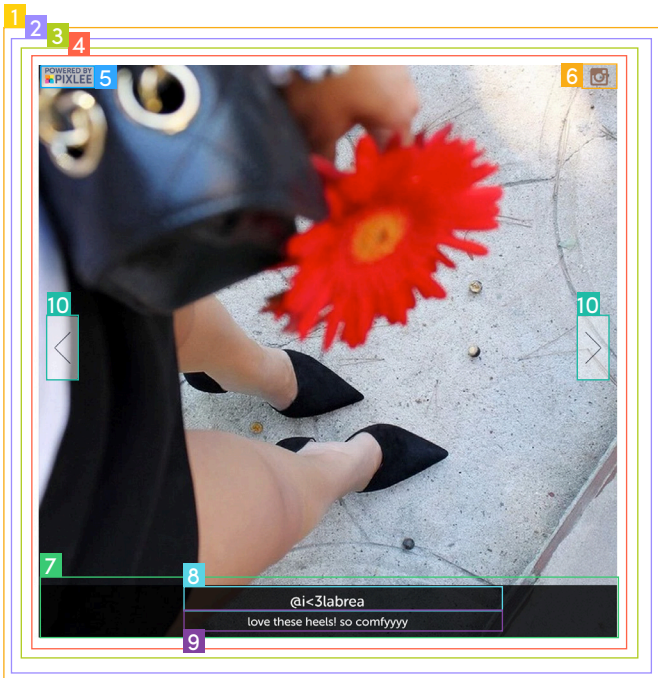
- Changing any of the selectors on page 23 will affect all Slideshow desktop, tablet, and mobile views.
- To style elements in only tablet view and not affect desktop and mobile views
 - add `.slideshow_tablet` at the beginning of the selector.
- To style elements in only mobile view and not affect desktop and tablet views
 - add `.slideshow_mobile` to the beginning of the selector.
- Example
 - Default selector: `#widget_header #description_holder`
 - Tablet selector: `.slideshow_tablet #widget_header #description_holder`
 - Mobile selector: `.slideshow_mobile #widget_header #description_holder`

DESKTOP VIEW



TABLET & MOBILE VIEWS





Description	Desktop Selector
1 Holds all elements of the slideshow widget, including Powered by Pixlee attribution icon	<code>#slideshow_widget</code>
2 Holds all elements of the slideshow widget	<code>#slideshow_widget .slideshow_frame</code>
3 Photo Item. Used in conjunction with “Photo Item” on page 4 , this selector styles each photo block in the slideshow widget. Gives the content its size.	<code>#slideshow_widget .slideshow_frame ul .photo_block</code>
4 Content. The photo or the video being displayed.	<code>#slideshow_widget .slideshow_frame ul .photo_block .img_holder</code>
5 Powered by Pixlee Attribution Icon. Required on all widgets except widgets of Enterprise customers	<code>#slideshow_widget #powered_by</code>
6 Source Icon. Displays which platform the content came from.	<code>#slideshow_widget .slideshow_frame ul .photo_block .content_source</code>
7 Photo Info. Contains the user handle and caption. This container is normally hidden but slides into view upon hover on desktop. It is shown on default in tablet and mobile.	<code>#slideshow_widget .slideshow_frame ul .photo_block .info_content</code>
8 Submitter Name. The user handle is displayed for Instagram and Twitter, and the submitter name is displayed for direct upload and Facebook.	<code>#slideshow_widget .slideshow_frame ul .photo_block .info_content .users_handle a</code>
9 Captions	<code>#slideshow_widget .slideshow_frame ul .photo_block .info_content .users_caption</code>
10 Arrows. Styles both the left and right buttons	<code>#slideshow_widget .controls .btn</code>
Left Arrow	<code>#slideshow_widget .controls .prev</code>
Right Arrow	<code>#slideshow_widget .controls .next</code>
Disable Arrows	<code>#slideshow_widget .controls .disabled</code>



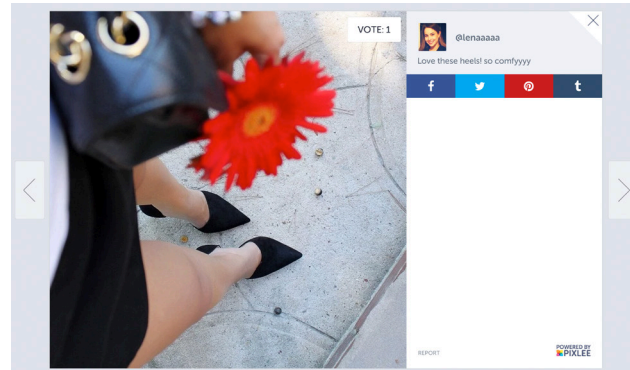
Lightbox

Lightbox displays a bigger versions of photos. Calls to Action and products are shown within the lightbox. Viewers can also share photos to social media. There are three versions of the lightbox, for desktop, tablet, and mobile views.

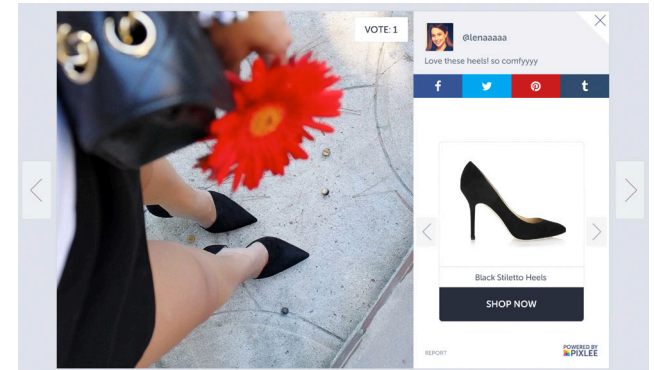
Desktop Lightbox

The lightbox showcases content at a bigger scale. The default lightbox has no Calls to Action. However, CTAs are great for products or any calls to action. While going through the publishing flow, make sure that the Call To Action Button toggle is on to add regular Calls to Action. To add CTAs on lightboxes on PDP pages, go through the product categories.

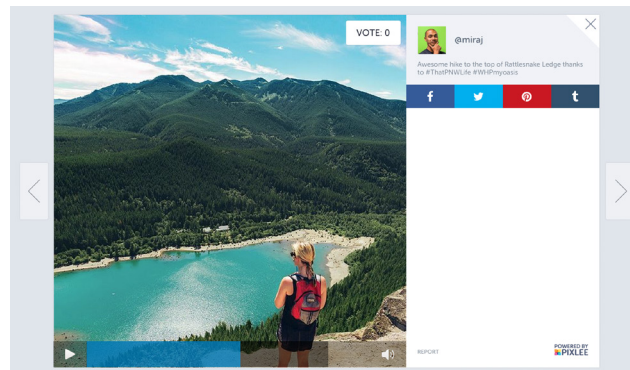
DEFAULT LIGHTBOX

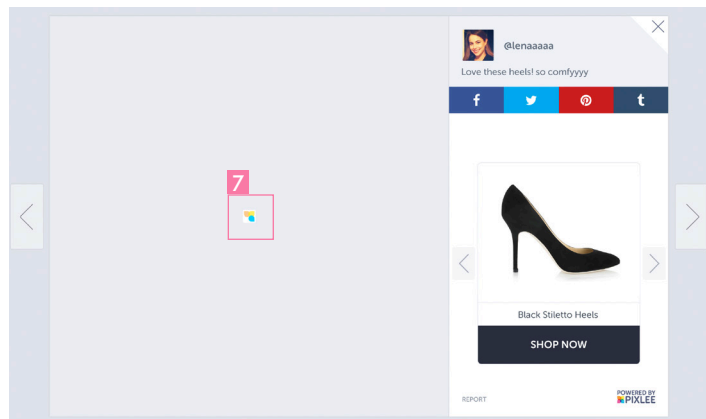
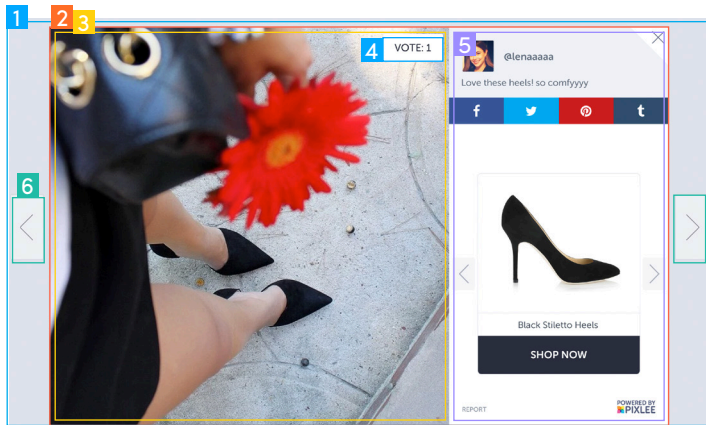


LIGHTBOX WITH CALLS TO ACTION



DEFAULT VIDEO LIGHTBOX ON HOVER

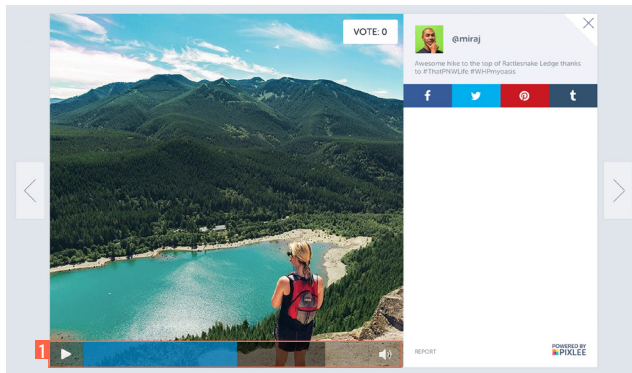
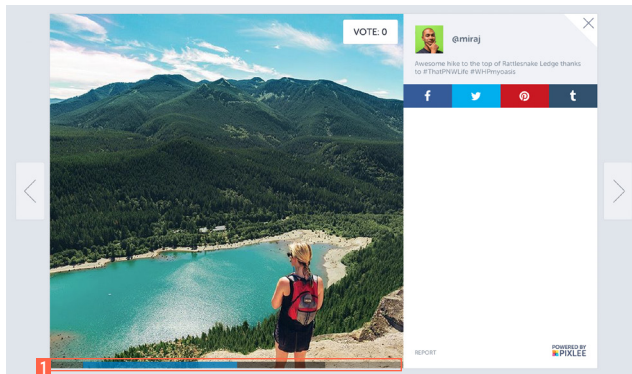




Description

Desktop Selector

1	Overlay. Gray semi-transparent overlay. Styling this will affect desktop and tablet. In mobile, the lightbox takes the whole screen, so the overlay is not noticeable.	<code>.mfp-wrap</code>
2	Lightbox Content. Contains all lightbox content and gives the lightbox its 960px x 620px dimensions.	<code>#photo_lightbox_wrapper</code>
3	Photo Container. Its dimensions are 620px x 620px	<code>#left_panel</code>
4	Vote button. Used for contests where users can vote on photos. Jelly animation upon hover. "Vote" text is a <code>::before</code> pseudo-element.	<code>#photo_lightbox_wrapper #right_panel .vote_button</code>
	Vote Count. Shows the number of votes the photo. The colon ":" is a <code>::before</code> pseudo-element.	<code>#photo_lightbox_wrapper #right_panel .vote_button .vote_count</code>
	Voted. When a photo has been voted upon, the button turns blue and is disabled from further voting. The "Vote" text becomes "Voted" and loses its jelly hover effect. The "Voted" text is a <code>::before</code> pseudo-element.	<code>#photo_lightbox_wrapper #right_panel .vote_button.active</code>
5	Right Panel. Contains all right side content and gives its 340px x 620px dimensions	<code>#right_panel</code>
6	Arrows. Styles both arrows. On hover, the arrow becomes more opaque.	<code>.mfp-arrow</code>
	Left Arrow.	<code>.mfp-arrow-left</code>
	Right Arrow.	<code>.mfp-arrow-right</code>
7	Loader. Shows when a photo or video is being uploaded.	<code>.mfp-preloader</code>



Description

1

Controller Container. Contains all video controllers. In the default view, the controller is small. When the video is hovered over, the controller expands so that the buttons are visible and the viewer can scrub along the timeline.

Controller Elements. Styles all controller elements (all the elements listed below).

2

Styles play/pause button

Play Icon

Pause Icon

3

Holds the progress bar (played and unplayed)

Styles both blue played and gray unplayed progress bars

Loading Progress Bar: Darker progress bar indicates the unplayed footage

Blue progress bar indicates the played footage

4

Position & background of sound button

Sound Icon

Mute Icon

Desktop Selector

`.vjs-default-skin .vjs-control-bar`

`.vjs-default-skin .vjs-control`

`.vjs-default-skin .vjs-play-control`

`.vjs-default-skin .vjs-play-control:before`

`.vjs-default-skin.vjs-playing .vjs-play-control:before`

`.vjs-default-skin .vjs-progress-control`

`.vjs-default-skin .vjs-progress-holder .vjs-play-progress, .vjs-default-skin .vjs-progress-holder .vjs-load-progress`

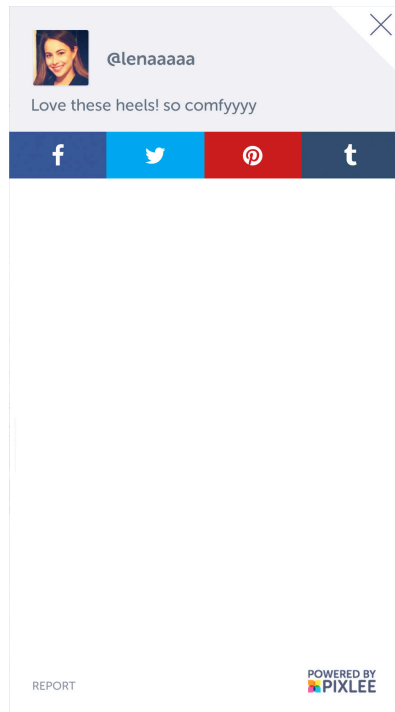
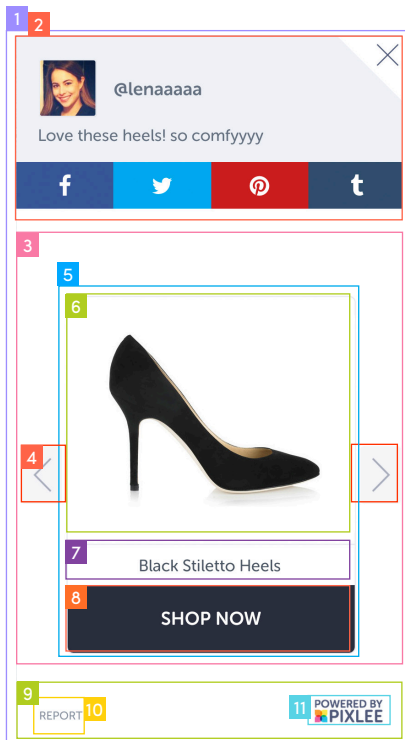
`.vjs-default-skin .vjs-load-progress`

`.vjs-default-skin .vjs-play-progress`

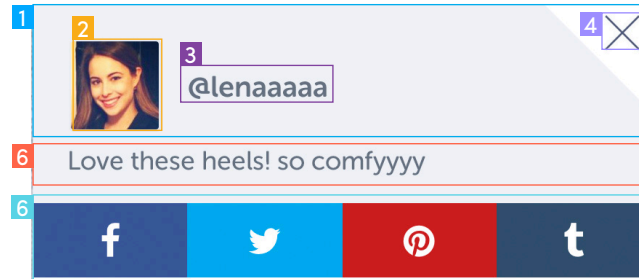
`.vjs-default-skin .vjs-mute-control, .vjs-default-skin .vjs-volume-menu-button`

`.vjs-default-skin .vjs-mute-control:before, .vjs-default-skin .vjs-volume-menu-button:before`

`.vjs-default-skin .vjs-mute-control.vjs-vol-0:before, .vjs-default-skin .vjs-volume-menu-button.vjs-vol-0:before`



	Description	Desktop Selector
1	Right Panel. Contains everything in the right panel.	#photo_lightbox_wrapper #right_panel
2	Top Container. Contains submitter avatar, submitter handle, caption, and social sharing icons. Has the light gray background. Selectors of elements within this container are covered on the next page.	#photo_lightbox_wrapper #right_panel #top_block
3	Middle Container. Depending on the tier of your Pixlee account, this area might contain CTA or tagged product. The default lightbox does not contain CTA. In a default lightbox, this area is normally left empty and the arrows are not shown. To have CTA, when publishing an album, make sure the Call to Action toggle is on within the Control Panel. To display products, this is turned on within the Product Categories page in the Control Panel.	#photo_lightbox_wrapper #right_panel #middle_block
4	Arrows. These arrows are hidden on default but are shown when .active is added. .active is added when there is more than one product.	#photo_lightbox_wrapper #right_panel #middle_block .active
	Left Arrow	#photo_lightbox_wrapper #right_panel #middle_block #cta_prev
	Right Arrow	#photo_lightbox_wrapper #right_panel #middle_block #cta_next
5	Call To Action Block. Contains the CTA image, description, and button. This animates after a 3-second delay to capture the user's attention. Clicking anywhere in this area will take you to the CTA link.	#photo_lightbox_wrapper #right_panel #middle_block a
6	CTA Image.	#photo_lightbox_wrapper #right_panel #middle_block a .cta_img
7	CTA Description. This is hidden in both tablet and mobile views.	#photo_lightbox_wrapper #right_panel #middle_block a .product_name
8	CTA Button	#photo_lightbox_wrapper #right_panel #middle_block a .product_cta
9	Bottom Container. Contains Reporting Content and Pixlee attribution.	#photo_lightbox_wrapper #right_panel #bottom_block
10	Reporting Content Button. Flags inappropriate content	#photo_lightbox_wrapper #right_panel #bottom_block #report_button
11	Powered by Pixlee Attribution Icon. Required on all widgets except widgets of Enterprise customers	#photo_lightbox_wrapper #right_panel #bottom_block #powered_by_pixlee



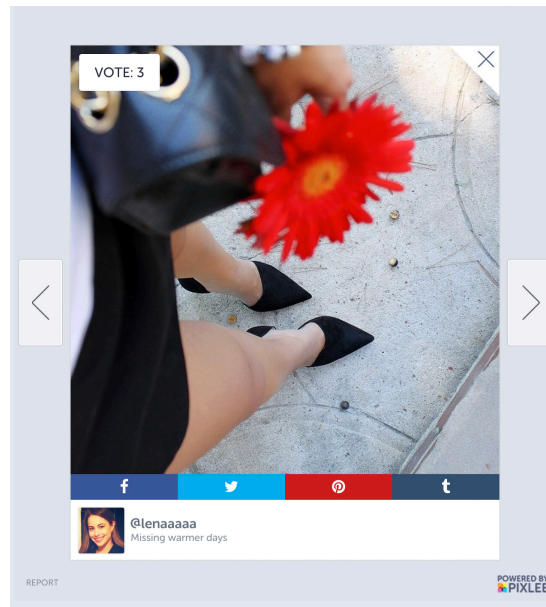
Description	Desktop Selector
1 Submitter Info. Contains submitter avatar and handle or name	<code>#photo_lightbox_wrapper #right_panel #top_block #user_info_holder</code>
2 Avatar Container. Holds avatar image and placeholder image for when the avatar is missing.	<code>#photo_lightbox_wrapper #right_panel #top_block #user_info_holder #user_avatar</code>
Avatar Image	<code>#photo_lightbox_wrapper #right_panel #top_block #user_info_holder #user_avatar img</code>
3 Submitter Handle or Name	<code>#photo_lightbox_wrapper #right_panel #top_block #user_info_holder #user_name</code>
4 Close Button. Closes the lightbox. This is the default close button and changing this style will affect desktop, tablet, and mobile.	<code>.mfp-close</code>
5 Caption.	<code>#photo_lightbox_wrapper #right_panel #top_block #caption_holder</code>
6 Social Sharing Icons Container.	<code>#photo_lightbox_wrapper #right_panel #top_block #social_holder</code>
Social Sharing Icons. Styles all social sharing icons. Icons scale slightly when hovered upon.	<code>#photo_lightbox_wrapper #right_panel #top_block #social_holder a</code>
Facebook Sharing Icon. The icon itself is an <code>::after</code> pseudo-element	<code>#photo_lightbox_wrapper #right_panel #top_block #social_holder a#facebook_share</code>
Twitter Sharing Icon. The icon itself is an <code>::after</code> pseudo-element.	<code>#photo_lightbox_wrapper #right_panel #top_block #social_holder a#twitter_share</code>
Pinterest Sharing Icon. The icon itself is an <code>::after</code> pseudo-element.	<code>#photo_lightbox_wrapper #right_panel #top_block #social_holder a#pinterest_share</code>
Tumblr Sharing Icon. The icon itself is an <code>::after</code> pseudo-element.	<code>#photo_lightbox_wrapper #right_panel #top_block #social_holder a#tumblr_share</code>

Tablet Lightbox

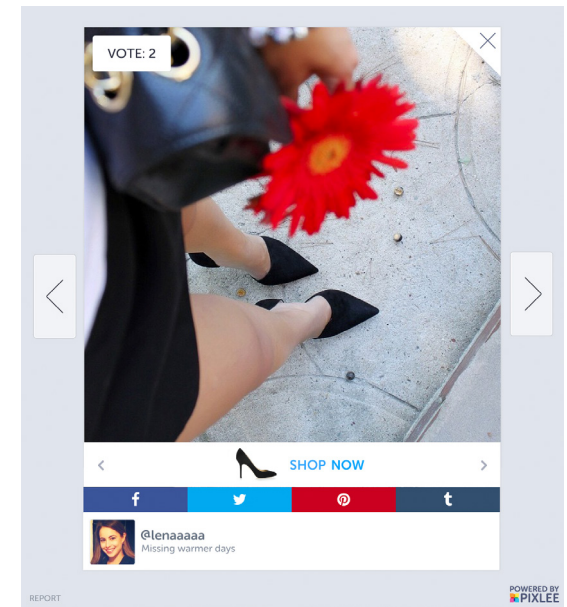
The lightbox showcases content at a bigger scale. The default lightbox has no Calls to Action. However, CTAs are great for products or any calls to action. While going through the publishing flow, make sure that the Call To Action Button toggle is on to add regular Calls to Action. To add CTAs on lightboxes on PDP pages, go through the product categories.

The selectors for the desktop lightbox are not necessarily the same selectors for the tablet lightbox.

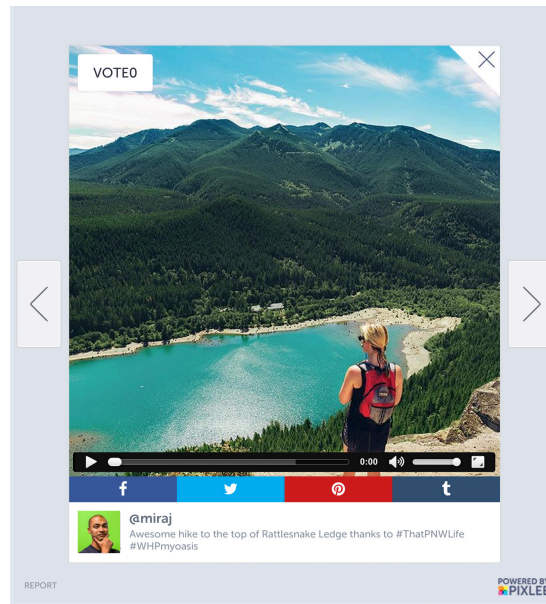
DEFAULT LIGHTBOX

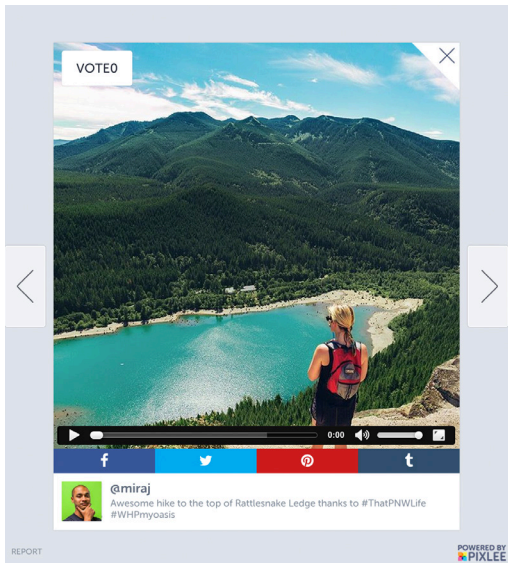
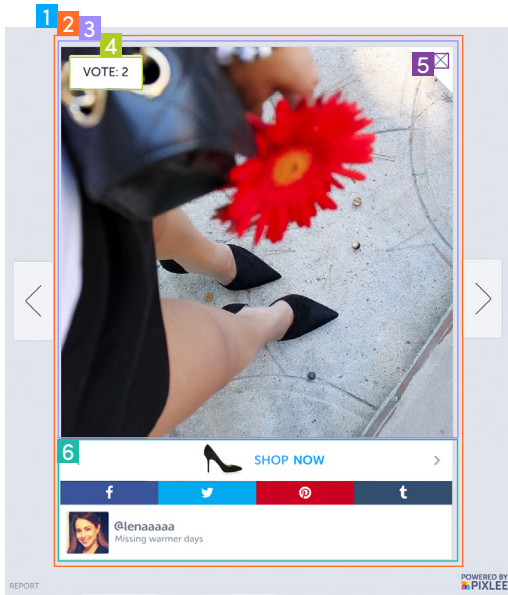


LIGHTBOX WITH CALLS TO ACTION

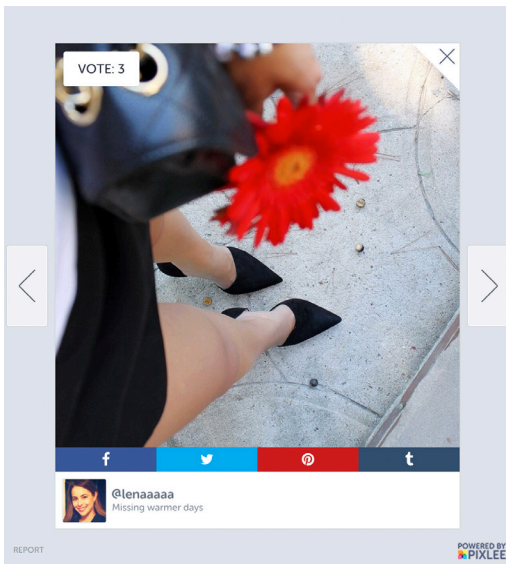
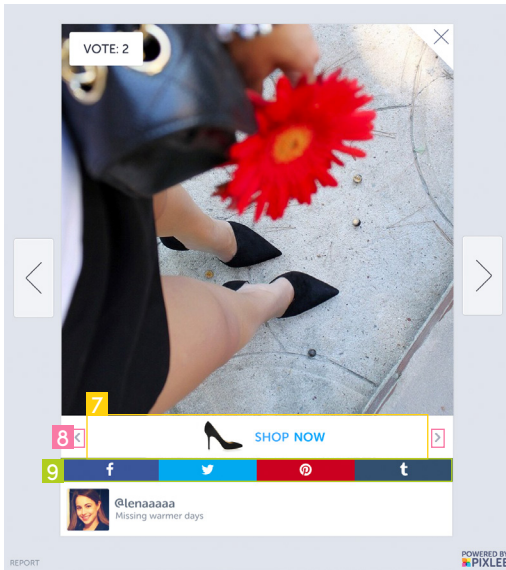


DEFAULT VIDEO LIGHTBOX





	Description	Tablet Selector
1	Overlay. Gray semi-transparent overlay. Styling this will affect desktop, tablet, and mobile.	<code>.mfp-bg</code>
2	Lightbox Content Holder. Contains all lightbox content and gives the lightbox its 500px x 600px dimensions.	<code>#photo_lightbox_wrapper</code>
3	Photo/Video Holder. Contains both pictures and videos	<code>#photo_lightbox_wrapper #top_panel</code>
	Image. Photo is held in this div.	<code>#photo_lightbox_wrapper #top_panel img</code>
	Video. The styles for the video controllers on desktop are not applied to video controllers on tablet and mobile. Tablet and mobile video have the default HTML5 styles.	<code>#photo_lightbox_wrapper #top_panel #pixlee_video</code>
4	Vote button. Used for contests where users can vote on photos. Jelly animation upon hover. "Vote" text is a <code>::before</code> pseudo-element.	<code>#photo_lightbox_wrapper .vote_button</code>
	Vote Count. Shows the number of votes the photo. The colon ":" is a <code>::before</code> pseudo-element.	<code>#photo_lightbox_wrapper .vote_button .vote_count</code>
	Voted. When a photo has been voted upon, the button turns blue and is disabled from further voting. The "Vote" text becomes "Voted" and loses its jelly hover effect. The "Voted" text is a <code>::before</code> pseudo-element.	<code>#photo_lightbox_wrapper .vote_button.active</code>
5	Close Button. Closes the lightbox. This is the default close button and changing this style will affect desktop, tablet, and mobile.	<code>.mfp-close</code>
6	Bottom Panel. Holds CTA, Social Sharing Icons, submitter info, and caption	<code>#photo_lightbox_wrapper #bottom_panel</code>



Description

7 Call To Action Block. Contains the CTA image and text. The default lightbox does not contain CTA. In a default lightbox, this area is normally left empty. To have CTA, when publishing an album, make sure the Call to Action toggle is on within the Control Panel. To display products, this is turned on within the Product Categories page in the Control Panel.

CTA Image.

Tablet Selector

`#photo_lightbox_wrapper #bottom_panel #cta_holder`

CTA Text

`#photo_lightbox_wrapper #bottom_panel #cta_holder #cta_content #cta_img`

`#photo_lightbox_wrapper #bottom_panel #cta_holder #cta_content #cta_text`

8 Arrows

Previous CTA Button

`#photo_lightbox_wrapper #bottom_panel #cta_prev`

Next CTA Button

`#photo_lightbox_wrapper #bottom_panel #cta_next`

9 Social Sharing Icons Container.

`#photo_lightbox_wrapper #bottom_panel #social_holder`

Social Sharing Icons. Styles all social sharing icons. Icons scale slightly when hovered upon.

Facebook Sharing Icon. The icon itself is an `::after` pseudo-element

`#photo_lightbox_wrapper #bottom_panel #social_holder a#facebook_share`

Twitter Sharing Icon. The icon itself is an `::after` pseudo-element.

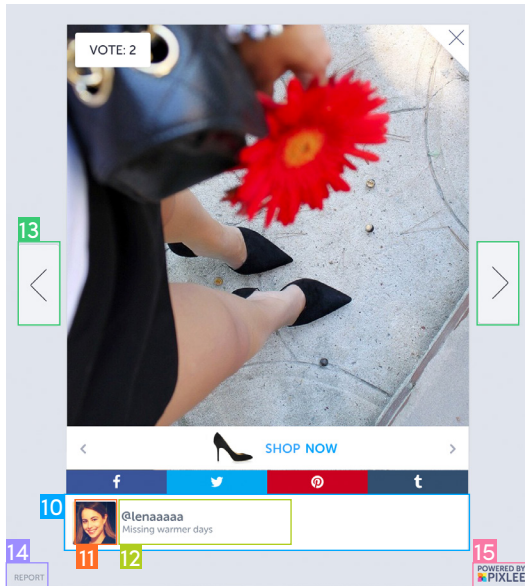
`#photo_lightbox_wrapper #bottom_panel #social_holder a#twitter_share`

Pinterest Sharing Icon. The icon itself is an `::after` pseudo-element.

`#photo_lightbox_wrapper #bottom_panel #social_holder a#pinterest_share`

Tumblr Sharing Icon. The icon itself is an `::after` pseudo-element.

`#photo_lightbox_wrapper #bottom_panel #social_holder a#tumblr_share`



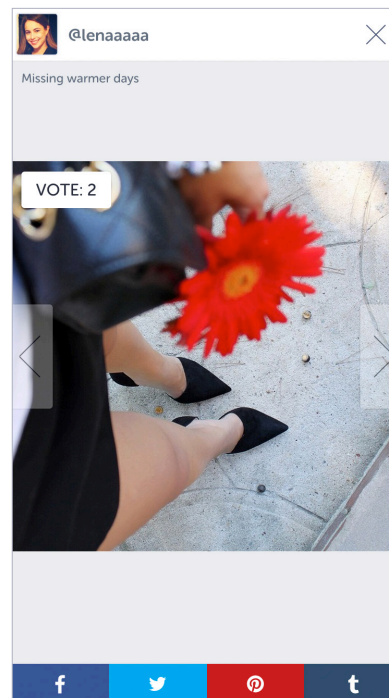
	Description	Tablet Selector
10	Submitter Info Container. Contains submitter avatar, submitter handle or name, and photo caption	<code>#photo_lightbox_wrapper #bottom_panel #info_block</code>
11	Avatar Container. Holds avatar image and placeholder image for when the avatar is missing.	<code>#photo_lightbox_wrapper #bottom_panel #info_block #user_info_holder #user_avatar</code>
	Avatar Image	<code>#photo_lightbox_wrapper #bottom_panel #info_block #user_info_holder #user_avatar img</code>
12	Submitter Handle and Caption Container.	<code>#photo_lightbox_wrapper #bottom_panel #info_block #user_info_holder #user_details</code>
	Submitter Handle or Name	<code>#photo_lightbox_wrapper #bottom_panel #info_block #user_info_holder #user_details #user_name</code>
	Caption.	<code>#photo_lightbox_wrapper #bottom_panel #info_block #user_info_holder #user_details #caption_holder</code>
13	Arrows. Styles both arrows. On hover, the arrow becomes more opaque.	<code>button.mfp-arrow</code>
	Left Arrow	<code>.mfp-arrow-left</code>
	Right Arrow	<code>.mfp-arrow-left</code>
14	Reporting Content Button. Flags inappropriate content	<code>#report_button</code>
15	Powered by Pixlee Attribution Icon. Required on all widgets except widgets of Enterprise customers	<code>#powered_by_pixlee</code>

Mobile Lightbox

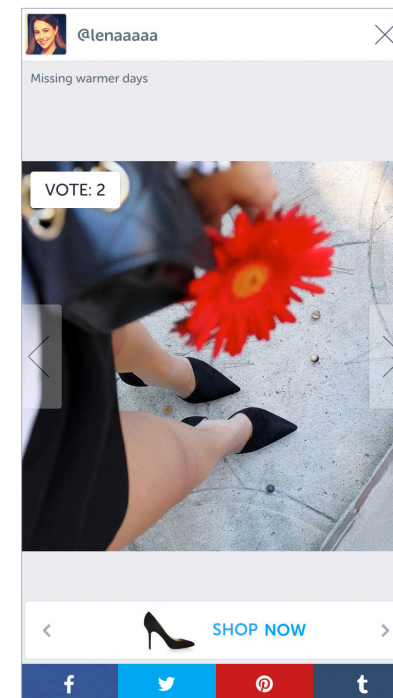
The lightbox showcases content at a bigger scale. The default lightbox has no Calls to Action. However, CTAs are great for products or any calls to action. While going through the publishing flow, make sure that the Call To Action Button toggle is on to add regular Calls to Action. To add CTAs on lightboxes on PDP pages, go through the product categories.

The selectors for the desktop lightbox are not necessarily the same selectors for the mobile lightbox.

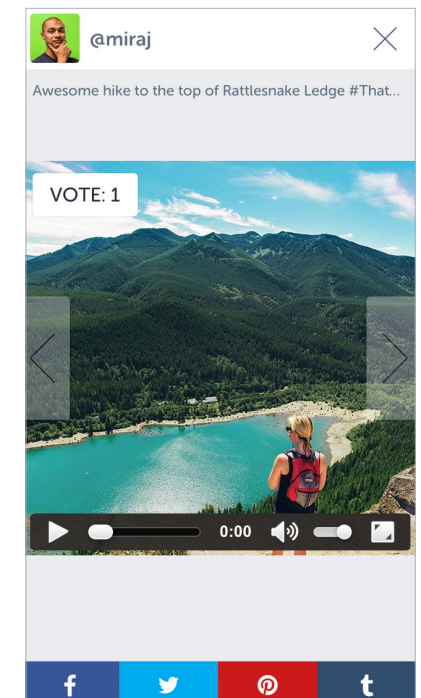
DEFAULT LIGHTBOX

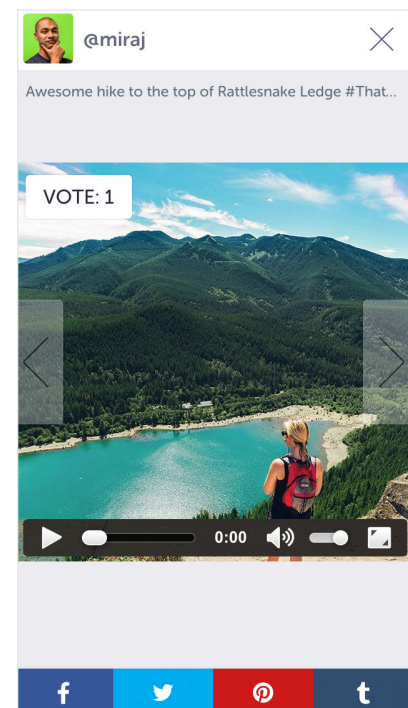
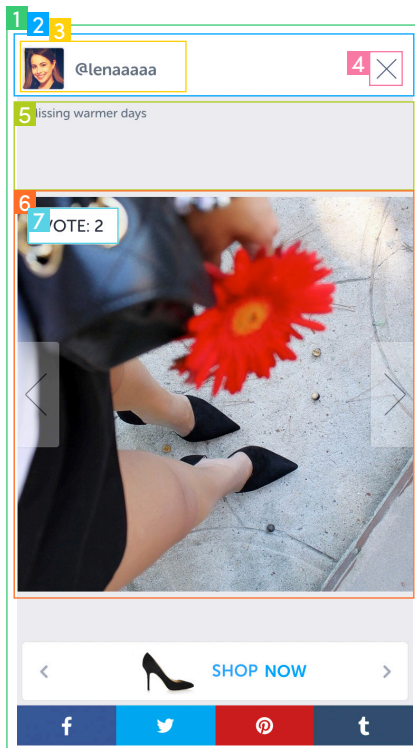


LIGHTBOX WITH CTA

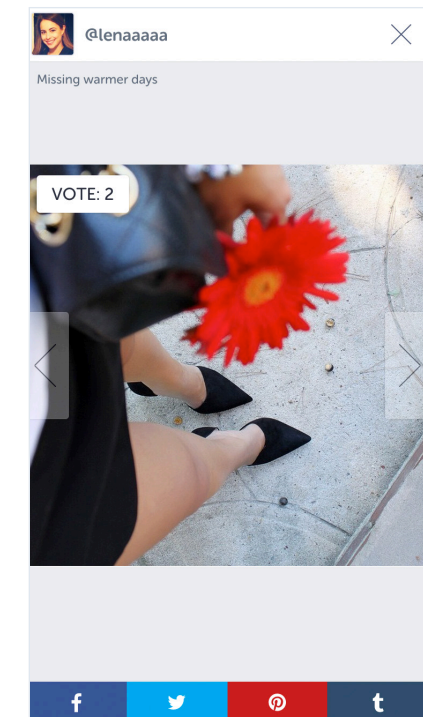
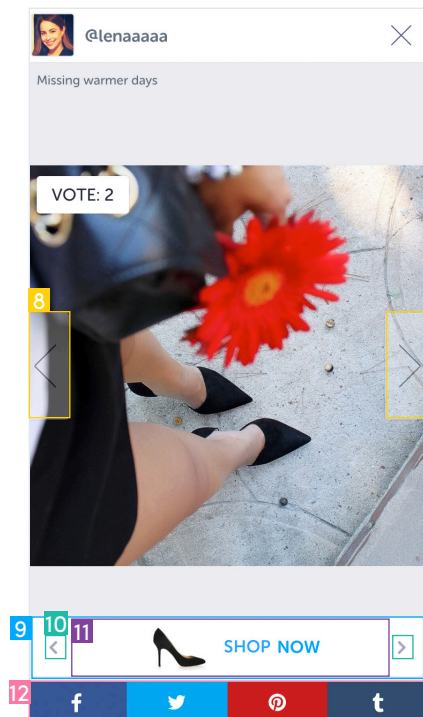


VIDEO LIGHTBOX





Description	Mobile Selector
1 Mobile Lightbox Content Holder	#photo_lightbox_wrapper_mobile
2 Top Info Container. Holds the avatar, submitter handle, and close button.	#photo_lightbox_wrapper_mobile #info_panel
3 Submitter Info. Contains submitter avatar and submitter handle or name.	#photo_lightbox_wrapper_mobile #info_panel #user_info_holder
Avatar Container. Holds avatar image and placeholder image for when the avatar is missing.	#photo_lightbox_wrapper_mobile #info_panel #user_info_holder #user_avatar
Avatar Image	#photo_lightbox_wrapper_mobile #info_panel #user_info_holder #user_avatar img
Submitter Handle or Name	#photo_lightbox_wrapper_mobile #info_panel #user_info_holder #user_name
4 Close Button. Closes the lightbox.	#photo_lightbox_wrapper_mobile #info_panel .mfp-close
5 Caption.	#photo_lightbox_wrapper_mobile #caption_holder
6 Content Holder. Contains both pictures and videos	#photo_lightbox_wrapper_mobile #im- age_holder
Image	#photo_lightbox_wrapper_mobile #im- age_holder img
Video. The desktop video styles are not applied to tablet and mobile video. Tablet and mobile video have the default HTML5 styles.	#photo_lightbox_wrapper_mobile #im- age_holder #pixlee_video
7 Vote button. Used for contests where users can vote on photos. Jelly animation upon hover. "Vote" text is a ::before pseudo-element.	#photo_lightbox_wrapper_mobile .vote_button
Vote Count. Shows the number of votes the photo. The colon ":" is a ::before pseudo-element.	#photo_lightbox_wrapper_mobile .vote_button .vote_count
Voted. When a photo has been voted upon, the button turns blue and is disabled from further voting. The "Vote" text becomes "Voted" and loses its jelly hover effect. The "Voted" text is a ::before pseudo-element.	#photo_lightbox_wrapper_mobile .vote_button.active



	Description	Mobile Selector
8	Arrows. Styles both arrows. On hover, the arrow becomes more opaque. This selector styles all arrows within widget for desktop, tablet, and mobile views if !important is added.	<code>.mfp-arrow</code>
	Left Arrow. Shows the previous photo. Styling this will desktop, tablet, and mobile views if !important is added.	<code>.mfp-arrow-left</code>
	Right Arrow. Shows the next photo. Styling this will desktop, tablet, and mobile views if !important.	<code>.mfp-arrow-right</code>
9	CTA container. The default lightbox does not contain CTA. In a default lightbox, this area is normally left empty. To have CTA, when publishing an album, make sure the Call to Action toggle is on within the Control Panel. To display products, this is turned on within the Product Categories page in the Control Panel.	<code>#photo_lightbox_wrapper_mobile</code> <code>#cta_holder</code>
10	Previous CTA button	<code>#photo_lightbox_wrapper_mobile</code> <code>#cta_prev</code>
	Next CTA button	<code>#photo_lightbox_wrapper_mobile</code> <code>#cta_next</code>
11	Call To Action Block. Contains the CTA image and text.	<code>#photo_lightbox_wrapper_mobile</code> <code>#cta_holder</code> <code>#cta_content</code>
	CTA Image.	<code>#photo_lightbox_wrapper_mobile</code> <code>#cta_holder</code> <code>#cta_content</code> <code>#cta_img</code>
	CTA Text	<code>#photo_lightbox_wrapper_mobile</code> <code>#cta_holder</code> <code>#cta_content</code> <code>#cta_text</code>
12	Social Sharing Icons Container. Holds all of the social sharing icons	<code>#photo_lightbox_wrapper_mobile</code> <code>#social_holder</code>
	Social Sharing Icons. Styles all social sharing icons. Icons scale slightly when hovered upon.	<code>#photo_lightbox_wrapper_mobile</code> <code>#social_holder</code> <code>a</code>
	Facebook Sharing Icon. The icon itself is an <code>::after</code> pseudo-element	<code>#photo_lightbox_wrapper_mobile</code> <code>#social_holder</code> <code>a#facebook_share</code>
	Twitter Sharing Icon. The icon itself is an <code>::after</code> pseudo-element.	<code>#photo_lightbox_wrapper_mobile</code> <code>#social_holder</code> <code>a#twitter_share</code>
	Pinterest Sharing Icon. The icon itself is an <code>::after</code> pseudo-element.	<code>#photo_lightbox_wrapper_mobile</code> <code>#social_holder</code> <code>a#pinterest_share</code>
	Tumblr Sharing Icon. The icon itself is an <code>::after</code> pseudo-element.	<code>#photo_lightbox_wrapper_mobile</code> <code>#social_holder</code> <code>a</code>

A photograph of a person with long hair writing in a spiral notebook with a black pen. The image is overlaid with a semi-transparent blue filter. The word "Uploader" is written in a white, sans-serif font across the middle of the image.

Uploader

The Uploader is perfect for your customers to directly upload their pictures into the widget, especially for content that is sitting on their computers or phones. The Upload button is also a great indication that the content in the widget is user generated.

Uploader

Photos can be uploaded to the widget from the customer's desktop (camera reel if on a phone), Instagram, or Facebook. Uploading from each of the three sources share similar steps. The panels to the right show all possible steps of the uploading process through the three sources. The below lists show the specific panels that are used for uploading via desktop, Instagram, and Facebook .

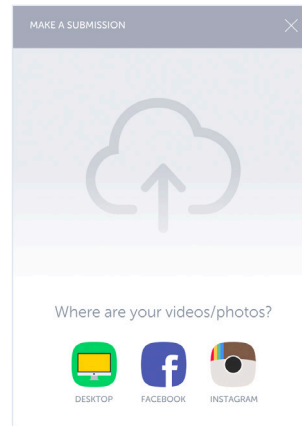
DESKTOP (Camera Reel if on camera)
Panels: A, D, E, H, I

FACEBOOK
Panels: A, B, D, F, G, H, I

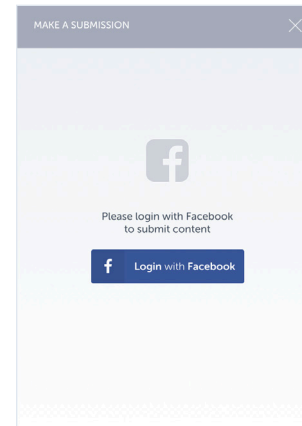
INSTAGRAM
Panels: A, C, D, H, I

In addition to the panels to the right, this section also contains miscellaneous panels such as loading, no content, and closing uploader warning.

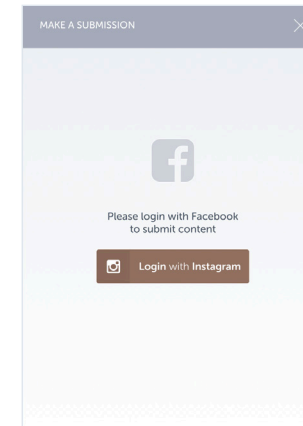
PANEL A



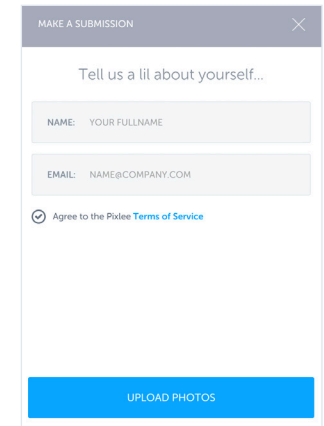
PANEL B



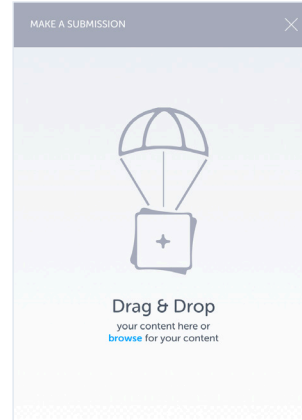
PANEL C



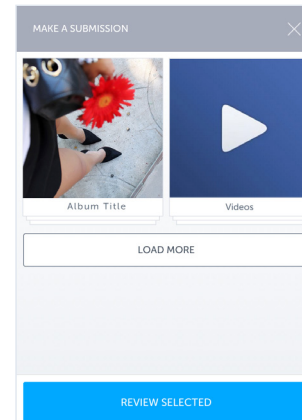
PANEL D



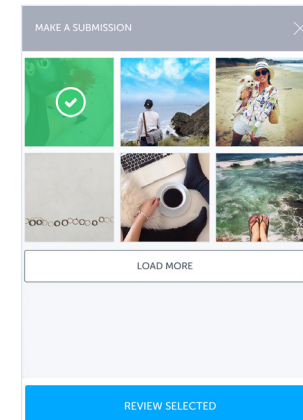
PANEL E



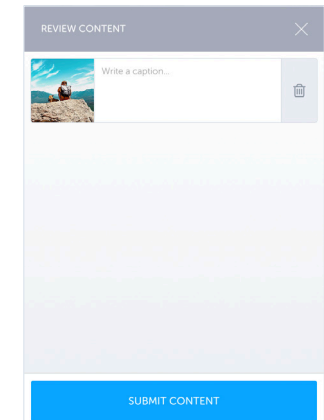
PANEL F



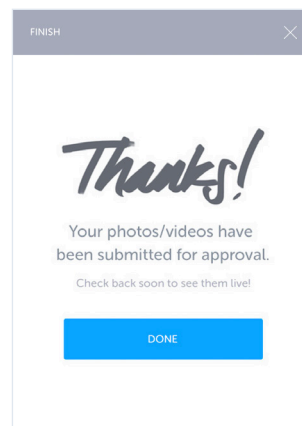
PANEL G

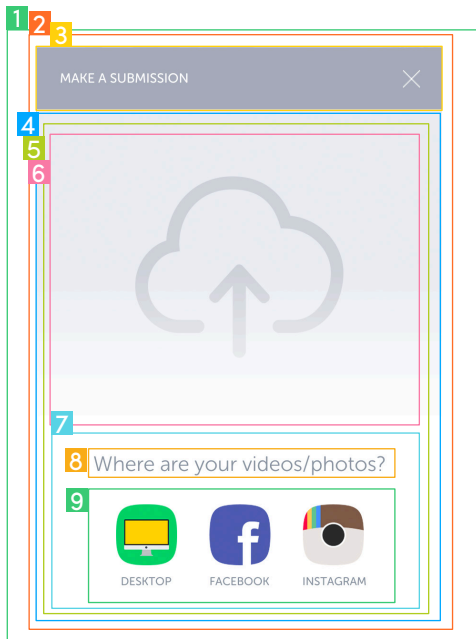


PANEL H

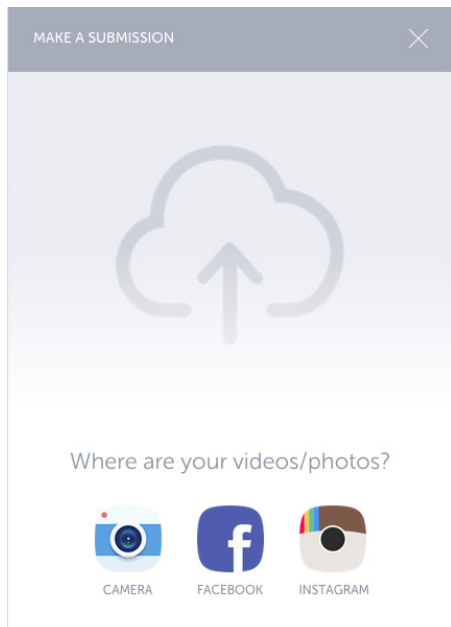
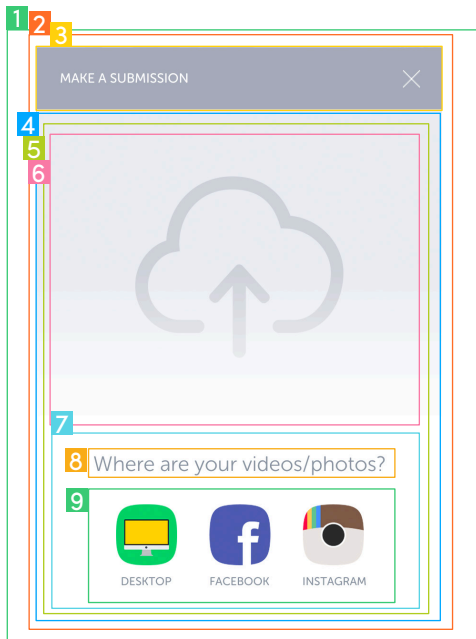


PANEL I





	Description	Desktop Selector
1	Overlay. Gray semi-transparent overlay.	<code>#uploader_overlay</code>
2	Uploader Container. Controls the 425px x 600px dimensions	<code>#uploader_frame</code>
3	Top Bar. Contains the Title and Close Lightbox Button	<code>#uploader_frame #top_bar</code>
	Title. Shows the step of the uploading process. The text changes based upon the step. The text is a <code>::before</code> pseudo-element.	<code>#uploader_frame #top_bar .current_panel_name</code>
	Close Button. Closes the lightbox.	<code>#uploader_frame #top_bar #close</code>
4	Content Holder. Holds the content. All panel blocks are held in here, and the panels are inter-changed depending on the step of the uploading process.	<code>#uploader_frame #content_holder</code>
5	Home Panel Content.	<code>#uploader_frame #content_holder .panel</code>
6	Top Banner Container. The Upload image is located here. Controls the height and has a gray background	<code>#uploader_frame #content_holder .panel#panel_home #top_banner</code>
	Gradient	<code>#uploader_frame #content_holder .panel#panel_home #top_banner #fade_gradient</code>
7	Contains question and source icons	<code>#uploader_frame #content_holder .panel#panel_home #choose_source</code>
8	Upload Question. Question is a <code>::before</code> pseudo-element	<code>#uploader_frame #content_holder .panel#panel_home #choose_source #source_header</code>
9	Upload Source Icons Container. Shows the options that user can submit photos from using the Uploader.	<code>#uploader_frame #content_holder .panel#panel_home #choose_source #source_list</code>



Description

Upload Source Icons. Styles all upload source icons. Jelly animation that affects both icon and source title upon hover.

Upload Source Title. All source titles are `::before` pseudo-elements

Desktop Source Icon. Upload picture from desktop. Desktop Source Icon is replaced by Camera Roll Source Icon when the uploader is opened in a tablet or phone (2nd diagram).

Facebook Source Icon

Instagram Source Icon

Desktop Selector

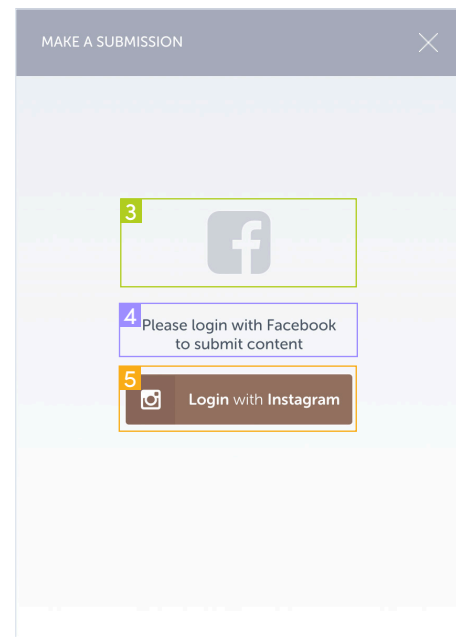
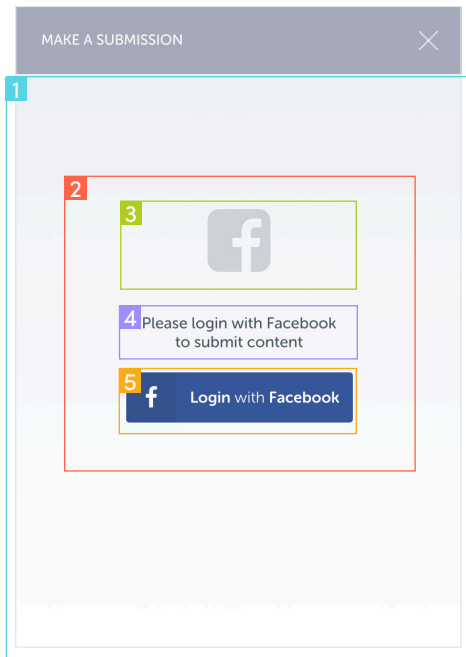
`#uploader_frame #content_holder .panel#panel_home #choose_source #source_list .source`

`#uploader_frame #content_holder .panel#panel_home #choose_source #source_list .source:hover span`

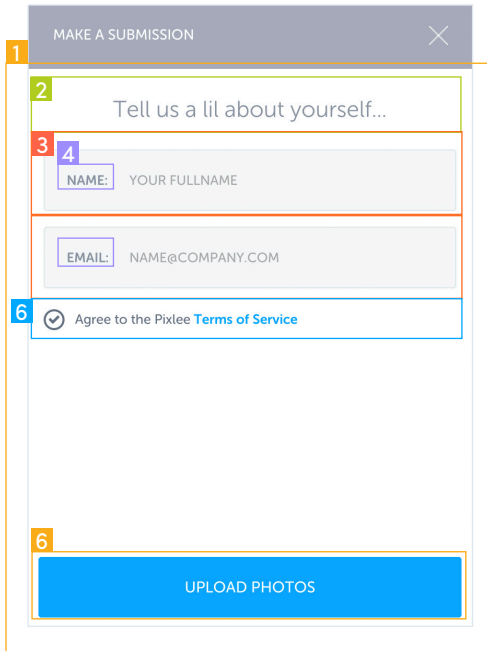
`#uploader_frame #content_holder .panel#panel_home #choose_source #source_list #source_desktop .icon`

`#uploader_frame #content_holder .panel#panel_home #choose_source #source_list #source_facebook .icon`

`#uploader_frame #content_holder .panel#panel_home #choose_source #source_list #source_instagram .icon`



	Description	Desktop Selector
1	Social Login Uploader Page. Styles the gradient.	<code>#uploader_frame #content_holder .panel#panel_login</code>
2	Social Login Container. Holds social login and centers it.	<code>#uploader_frame #content_holder .panel#panel_login #login_container</code>
3	Social Logo	<code>#uploader_frame #content_holder .panel#panel_login #login_container #login_logo</code>
	Facebook logo	<code>#uploader_frame #content_holder .panel#panel_login #login_container.login_facebook #login_logo:before</code>
	Instagram Logo	<code>#uploader_frame #content_holder .panel#panel_login #login_container.login_instagram #login_logo:before</code>
4	Login Instruction	<code>#uploader_frame #content_holder .panel#panel_login #login_container #login_instruction</code>
5	Social Login Button. Styles both Facebook and Instagram Login Buttons	<code>#uploader_frame #content_holder .panel#panel_login #login_container #login_button</code>
	Facebook Login Button	<code>#uploader_frame #content_holder .panel#panel_login #login_container.login_facebook #login_button</code>
	Facebook Icon on Login Button	<code>#uploader_frame #content_holder .panel#panel_login #login_container.login_facebook #login_button:before</code>
	Instagram Login Button	<code>#uploader_frame #content_holder .panel#panel_login #login_container.login_instagram #login_button</code>
	Instagram Icon on Login Button	<code>#uploader_frame #content_holder .panel#panel_login #login_container.login_instagram #login_button:before</code>



Description	Desktop Selector
1 Form Container.	<code>#uploader_frame #content_holder .panel#panel_form #form_wrapper</code>
2 Form Header. Header is a <code>::before</code> pseudo-element	<code>#uploader_frame #content_holder .panel#panel_form #form_wrapper #form_header</code>
3 Input Style. Styles all inputs to have gray border and background. Upon focus, border becomes blue and background becomes white.	<code>#uploader_frame #content_holder .panel#panel_form #form_wrapper input[type="text"]</code> <code>#uploader_frame #content_holder .panel#panel_form #form_wrapper input[type="email"]</code>
4 Label. Styles labels	<code>#uploader_frame #content_holder .panel#panel_form #form_wrapper input[type="text"] ~ label,</code> <code>#uploader_frame #content_holder .panel#panel_form #form_wrapper input[type="email"] ~ label</code>
Name Label. The "name" text is a <code>::before</code> pseudo-element	<code>#uploader_frame #content_holder .panel#panel_form #form_wrapper #name_input label:before</code>
Email Label. The "email" text is a <code>::before</code> pseudo-element	<code>#uploader_frame #content_holder .panel#panel_form #form_wrapper #email_input label:before</code>
5 Terms of Service	<code>#uploader_frame #content_holder .panel#panel_form #form_wrapper .tos_input</code>
Checkbox. Styles the circle.	<code>#uploader_frame #content_holder .panel#panel_form #form_wrapper .tos_input input[type="checkbox"]</code>
Checkmark. The actual checkmark is a <code>::before</code> pseudo-element	<code>#uploader_frame #content_holder .panel#panel_form #form_wrapper .tos_input input[type="checkbox"] ~ span</code>
"Agree to the Pixlee". Text is a <code>::before</code> pseudo-element	<code>#uploader_frame #content_holder .panel#panel_form #form_wrapper .tos_input label</code>
TOS Link Style	<code>#uploader_frame #content_holder .panel#panel_form #form_wrapper .tos_input a</code>
6 Generic Bottom Button. Styles the generic button at the bottom of most upload pages. Changing this will affect all bottom buttons on upload pages.	<code>#uploader_frame #content_holder .panel .bottom_button</code>

MAKE A SUBMISSION

Tell us a lil about yourself...

NAME: YOUR FULLNAME

EMAIL: NAME@COMPANY.COM

Agree to the Pixlee [Terms of Service](#)

6 **UPLOAD PHOTOS**

MAKE A SUBMISSION

Tell us a lil about yourself...

NAME: YOUR FULLNAME **REQUIRED** 7

EMAIL: NAME@COMPANY.COM **NOT AN EMAIL** 8

Agree to the Pixlee [Terms of Service](#) **REQUIRED** 9

UPLOAD PHOTOS

Description

Desktop Selector

Upload Photos Button. Styles Button. Text is `::before pseudo-element`

`#uploader_frame #content_holder .panel .bottom_button#done`

7 Error. When there is an error in the input, a red border appears around the text box, and an explanation appears. The explanation is a `::before pseudo-element`

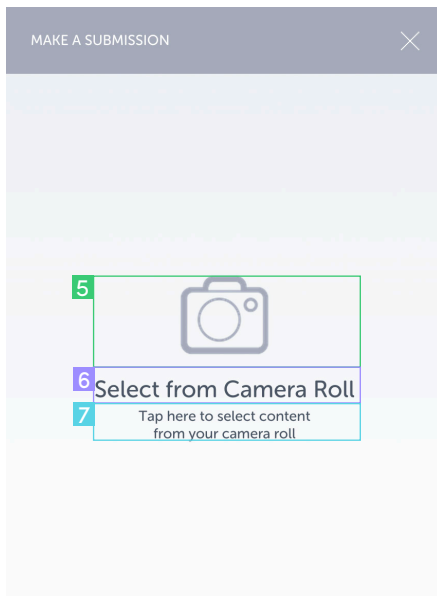
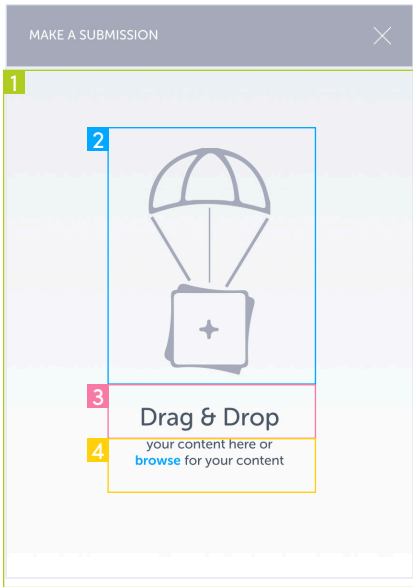
`#uploader_frame #content_holder .panel#panel_form #form_wrapper #name_input .error`

8 Email Validation. When the entered text is not an email, a red border appears around the text box, and an explanation appears. The explanation is a `::before pseudo-element`

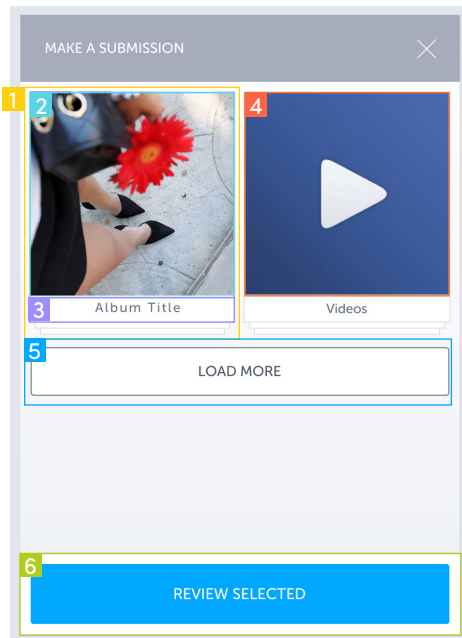
`#uploader_frame #content_holder .panel#panel_form #form_wrapper #email_input .validate`

9 TOS Error. Displayed when the TOS is not checked. Text is a `::before pseudo-element`

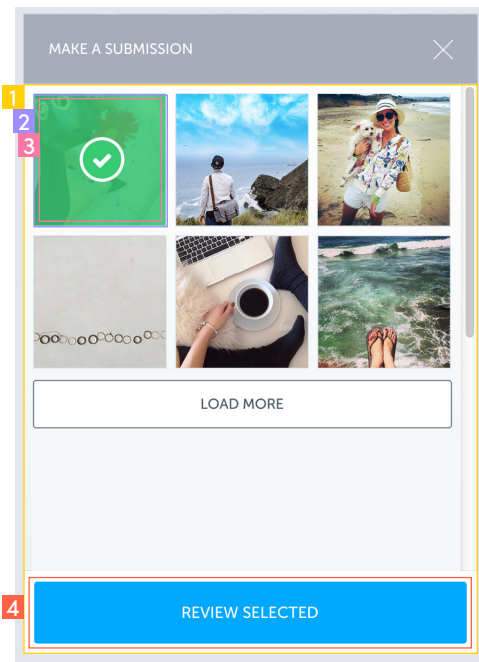
`#uploader_frame #content_holder .panel#panel_form #form_wrapper .tos_input .error`



Description	Desktop Selector
<p>1 Upload Uploader Page. Styles the gradient. Clicking anywhere within the frame will upload a picture.</p>	<pre>#uploader_frame #content_holder .panel#panel_drag_drop</pre>
<p>2 Desktop Image</p>	<pre>#uploader_frame #content_holder .panel#panel_drag_drop #drag_drop_container</pre>
<p>3 “Drag & Drop” Text</p>	<pre>#uploader_frame #content_holder .panel#panel_drag_drop #drag_drop_container #drag_drop_title:before</pre>
<p>4 Text. Text is ::before and ::after pseudo-element</p>	<pre>#uploader_frame #content_holder .panel#panel_drag_drop #drag_drop_container #drag_drop_title span</pre>
<p>“Browse” Text. Styles the text blue.</p>	<pre>#uploader_frame #content_holder .panel#panel_drag_drop #drag_drop_container #drag_drop_title span b:before</pre>
<p>5 Tablet and Mobile Image</p>	<pre>.uploader_tablet #uploader_frame #content_holder .panel#panel_drag_drop #drag_drop_container</pre>
<p>6 “Select from camera roll” Text</p>	<pre>.uploader_tablet #uploader_frame #content_holder .panel#panel_drag_drop #drag_drop_container #drag_drop_title:before</pre>
<p>7 Text. Text is ::before and ::after pseudo-element</p>	<pre>.uploader_tablet .mobile_selection_panel #drag_drop_title span:before</pre>



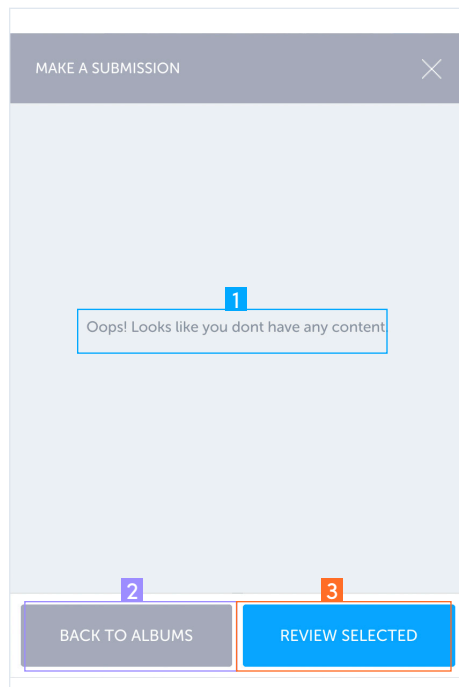
	Description	Desktop Selector
1	Album Block. Holds the image, the album title, and styles the album with multiple images	<code>#uploader_frame #content_holder .panel#panel_social #fb_albums_wrapper #fb_albums_container .social_album</code>
2	Image	<code>#uploader_frame #content_holder .panel#panel_social #fb_albums_wrapper #fb_albums_container .social_album .photo_item_image</code>
3	Album Title	<code>#uploader_frame #content_holder .panel#panel_social #fb_albums_wrapper #fb_albums_container .social_album .album_title</code>
4	Video. An image with video icon and blue gradient background indicates the video album.	<code>#uploader_frame #content_holder .panel#panel_social #fb_albums_wrapper #fb_albums_container .social_album.album_video .photo_item_image</code>
5	Load More Button. Loads more albums. Text is <code>::before pseudo-element</code>	<code>#uploader_frame #content_holder .panel#panel_social #fb_albums_wrapper #load_more</code>
6	Generic Bottom Button. Styles the generic button at the bottom of most upload pages. Changing this will affect all bottom buttons on upload pages.	<code>#uploader_frame #content_holder .panel .bottom_button</code>
	Review Selected Button. Styles button. Text is <code>::before pseudo-element</code>	<code>#uploader_frame #content_holder .panel .bottom_button#review_selected</code>



Description

Desktop Selector

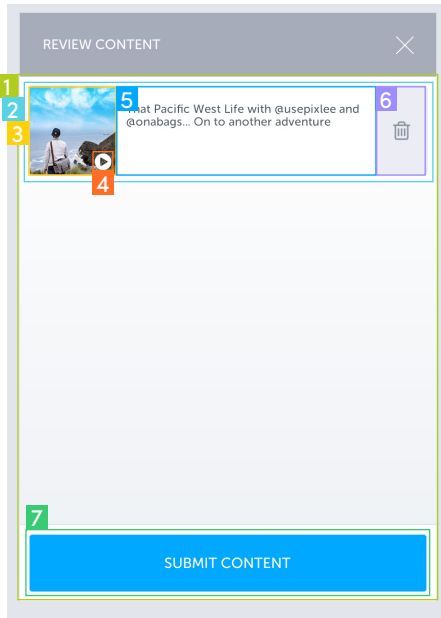
1	Photos Container	<code>#uploader_frame #content_holder .panel#panel_social #social_photo_wrapper</code>
2	Photo Block. This is where the image is displaced.	<code>#uploader_frame #content_holder .panel#panel_social #social_photo_wrapper .photo_item</code>
3	Currently Selected Indicator. Transparent green background overlays when the photo has been selected.	<code>#uploader_frame #content_holder .panel#panel_social #social_photo_wrapper .photo_item.active:before</code>
	Checkmark to signify the photo has been selected	<code>#uploader_frame #content_holder .panel#panel_social #social_photo_wrapper .photo_item.active:after</code>
4	Generic Bottom Button. Styles the generic button at the bottom of most upload pages. Changing this will affect all bottom buttons on upload pages.	<code>#uploader_frame #content_holder .panel .bottom_button</code>
	Review Selected Button. Styles Button. Text is <code>::before</code> pseudo-element	<code>#uploader_frame #content_holder .panel .bottom_button#review_selected</code>



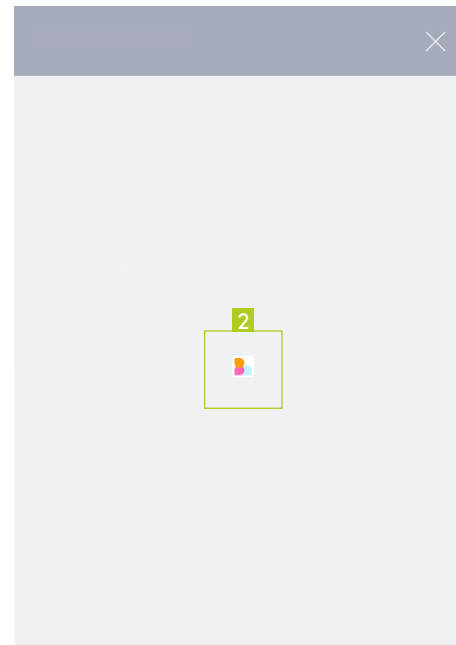
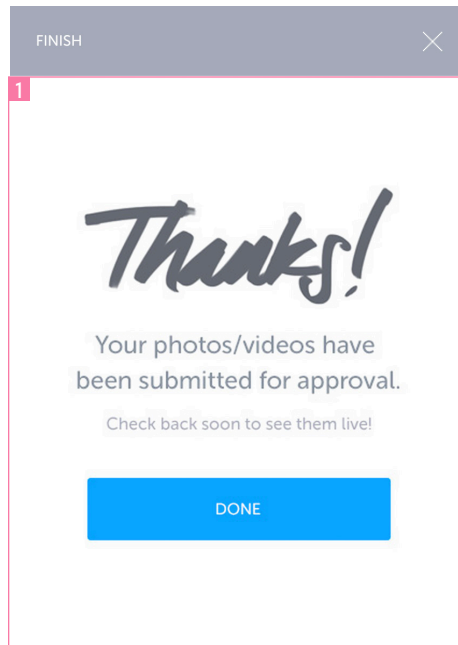
Description

Desktop Selector

1	Text is <code>::before</code> pseudo-element	<code>#uploader_frame #content_holder .panel#panel_social #social_photo_empty</code>
2	Back to Albums Button. Some of the styles are also in the <code>::before</code>	<code>#uploader_frame #content_holder .panel .bottom_button#back_albums</code>
3	Review Selected. Some of the styles are in the <code>::before</code>	<code>#uploader_frame #content_holder .panel .bottom_button#review_selected</code>



Description	Desktop Selector
1 Review Container. Holds all photos to review	#uploader_frame #content_holder .panel
2 Photo Block. Holds the photo, caption editor, and delete photo button.	#uploader_frame #content_holder .panel#panel_re- view #social_review_wrapper .photo_item_review
3 Image	#uploader_frame #content_holder .panel#panel_re- view #social_review_wrapper .photo_item_review .image_holder
4 Play Button. Indicates a video	#uploader_frame #content_holder .panel#panel_re- view #social_review_wrapper .photo_item_review. content_video:before
5 Text Area. Caption can be added or edited.	#uploader_frame #content_holder .panel#panel_re- view #social_review_wrapper .photo_item_review textarea
6 Delete Content Button. Trashcan ican turns red upon hover. Trashcan icon is a ::before pseu- do-element	#uploader_frame #content_holder .panel#panel_re- view #social_review_wrapper .photo_item_review .delete_content
7 Generic Bottom Button. Styles the generic button at the bottom of most upload pages. Changing this will affect all bottom buttons on upload pages.	#uploader_frame #content_holder .panel .bot- tom_button
Submit button. More styles are in the ::before	#uploader_frame #content_holder .panel .bottom_ button#submit_content



Description

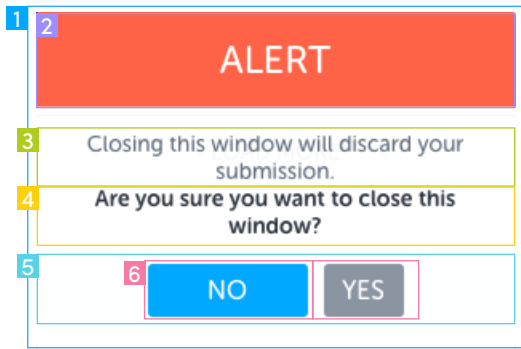
1 **Finish.** Shows when photos have been successfully submitted. This is an image. Clicking anywhere in the panel exits out of the lightbox

2 **Loader.** Indicates that content is being loaded.

Desktop Selector

`#uploader_frame #content_holder .panel#panel_confirmation`

`#uploader_frame #content_holder .panel#panel_social #social_photo_loading`



	Description	Desktop Selector
1	Alert Popup Modal	#uploader_frame #uploader_alert
2	Red Alert Header	#uploader_frame #uploader_alert #alert_title:before
3	Alert Description	#uploader_frame #uploader_alert #alert_title:after
4	Alert Question. Text is a ::before pseudo-element	#uploader_frame #uploader_alert #alert_desc:before
5	Alert Buttons Container	#uploader_frame #uploader_alert #alert_option
6	Buttons. Styles both yes and no buttons.	#uploader_frame #uploader_alert #alert_option #yes, #uploader_frame #uploader_alert #alert_option #no
	No Button	#uploader_frame #uploader_alert #alert_option #no
	Yes Button	#uploader_frame #uploader_alert #alert_option #yes



425 2nd Street
Suite 602
San Francisco, CA
94107

pixlee.com
hi@pixlee.com
855.474.9533



@pixlee

Pixlee's core belief is that customer stories are the most powerful way to articulate the value of a product or service and that more companies should be celebrating the voice of their own customers.

We are committed to building the tools that develop a more authentic marketing experience and to help brands create stronger relationships with their most passionate customers.

We work with over 150 customers, including top brands such as Kenneth Cole, Converse, UGG Australia, Mattel, Charlotte Russe, Marriott Hotels, and AMC Theatres, to drive higher online conversion, increase performance of owned media, and create a more authentic brand experience.

A graduate of the Stanford StartX accelerator, Pixlee is an Andreessen Horowitz and XSeed Capital portfolio company. As a rapidly growing startup, we are constantly looking for talented people to join the Pixlee team and help us revolutionize the relationship between people and brands.
